



Manpower figures and reporting procedure

Record of cumulative manpower contributions of Members :

- voting rights
- royalties
- monitoring

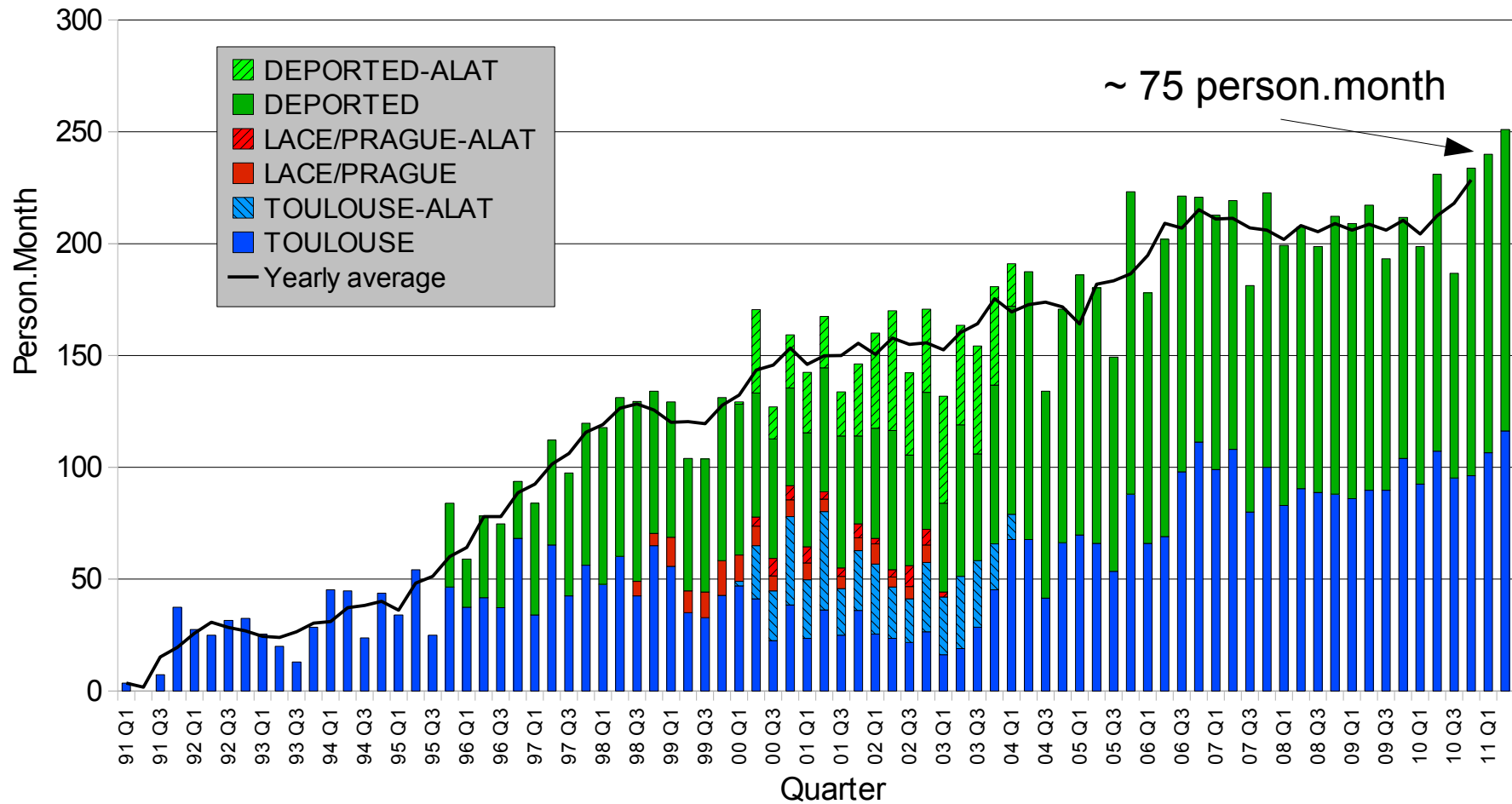
LTM's : registration of the quarterly manpower participation of their NMS

15th GA : revision of the guidelines for reporting practices → PAC 2011



Total participation in the ALADIN project

Evolution of the quarterly manpower

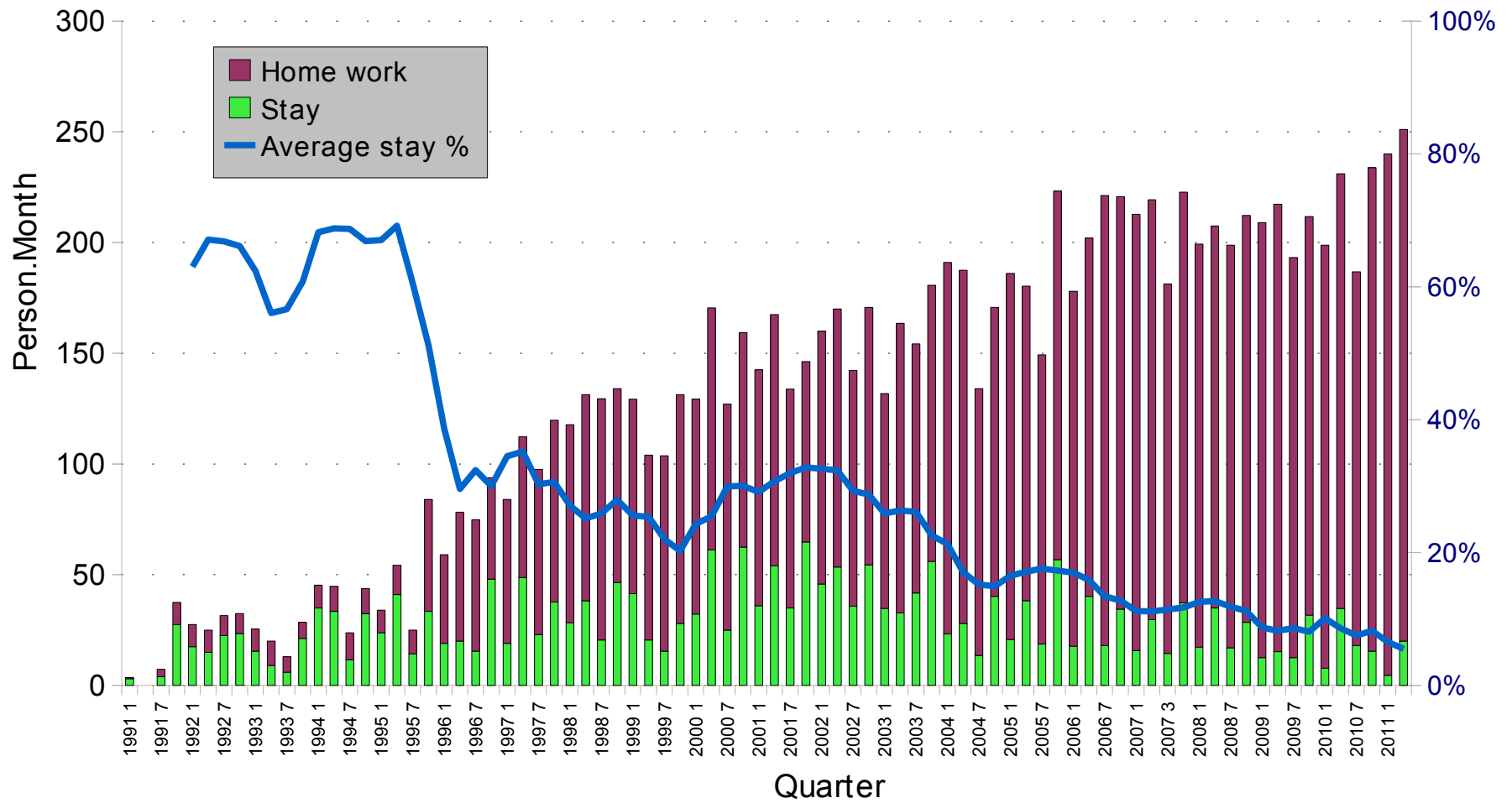


Updated on July 1, 2011



Total participation in the ALADIN project

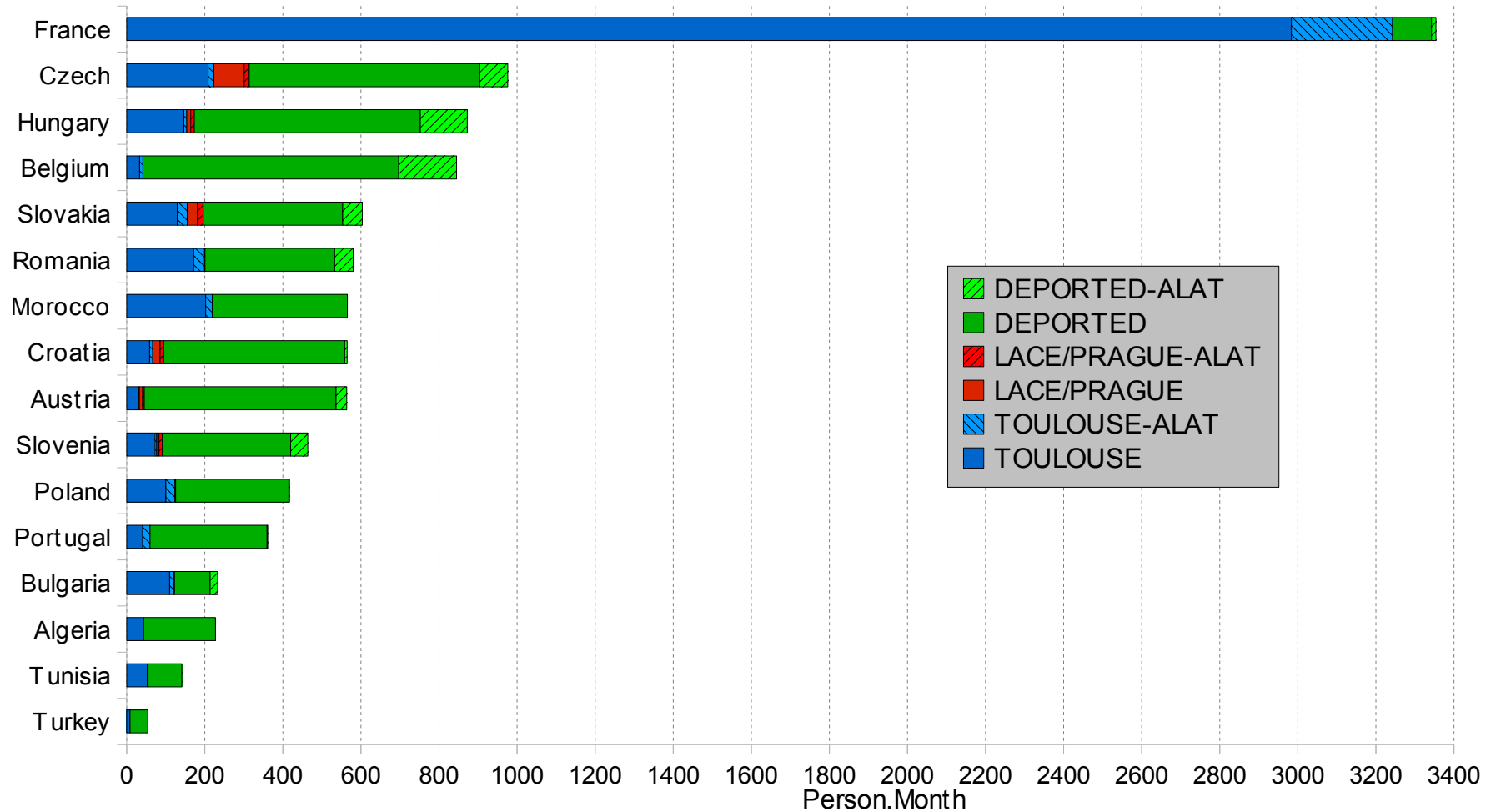
Evolution of the quarterly manpower





Total participation in the ALADIN project

Breakdown of the person.months by member



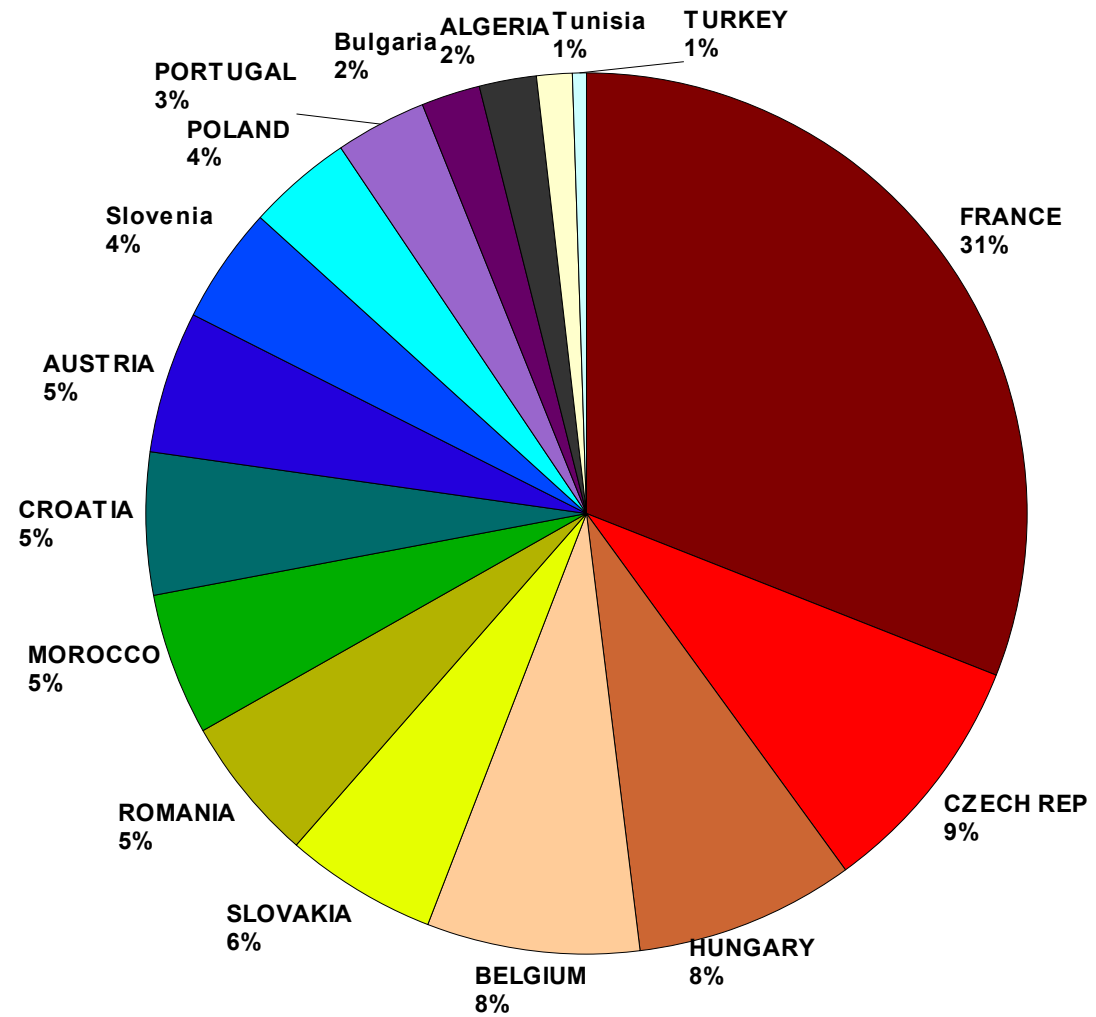
~ 985 person.year
~ 47 "full-time" persons per year

Updated on July 1, 2011



Total participation in the ALADIN project

Breakdown
of the
person.months
by
country

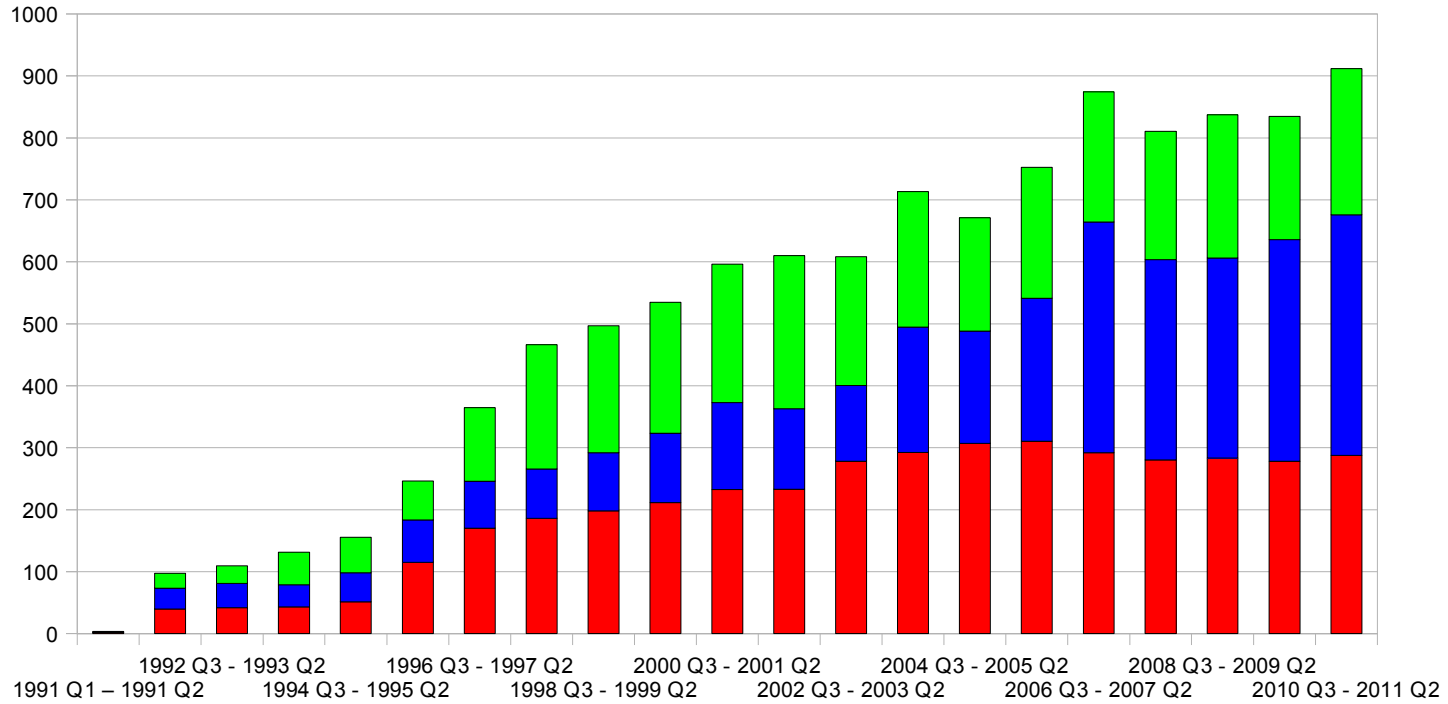


Updated on July 1, 2011



Breakdown of the participation in the ALADIN project

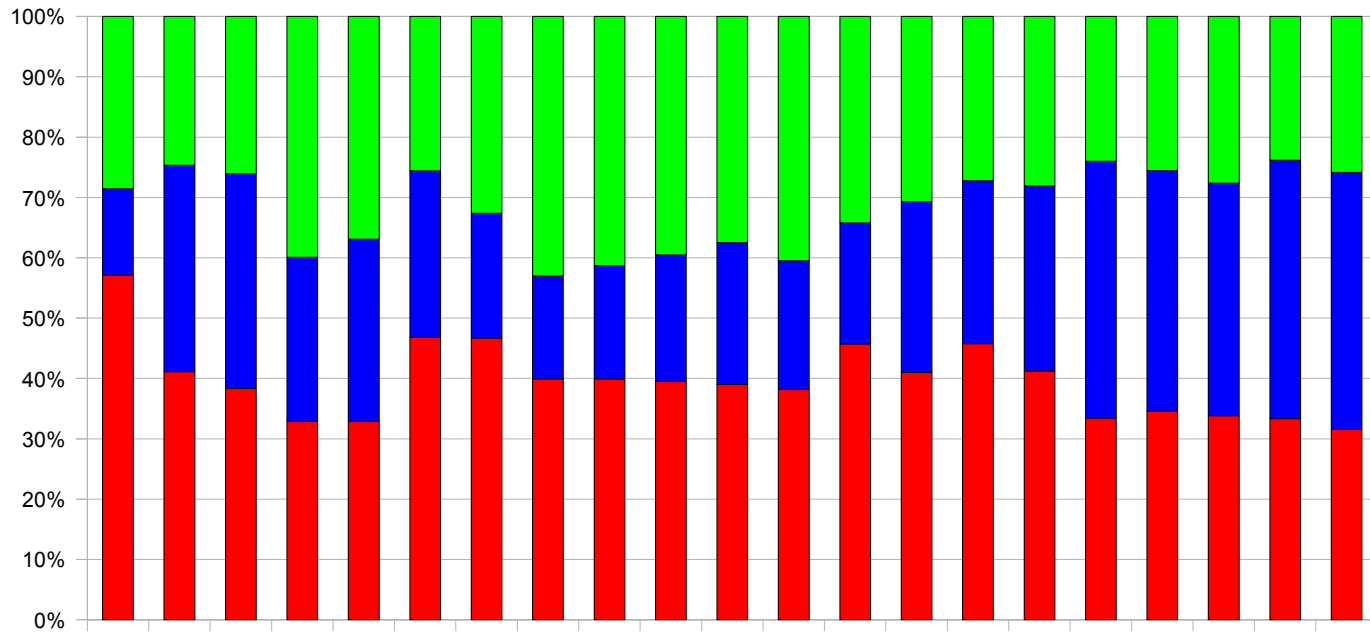
Yearly person.months



Flat-Rate
MF
LACE

23% FR
31% MF
46% LACE

Yearly percentage

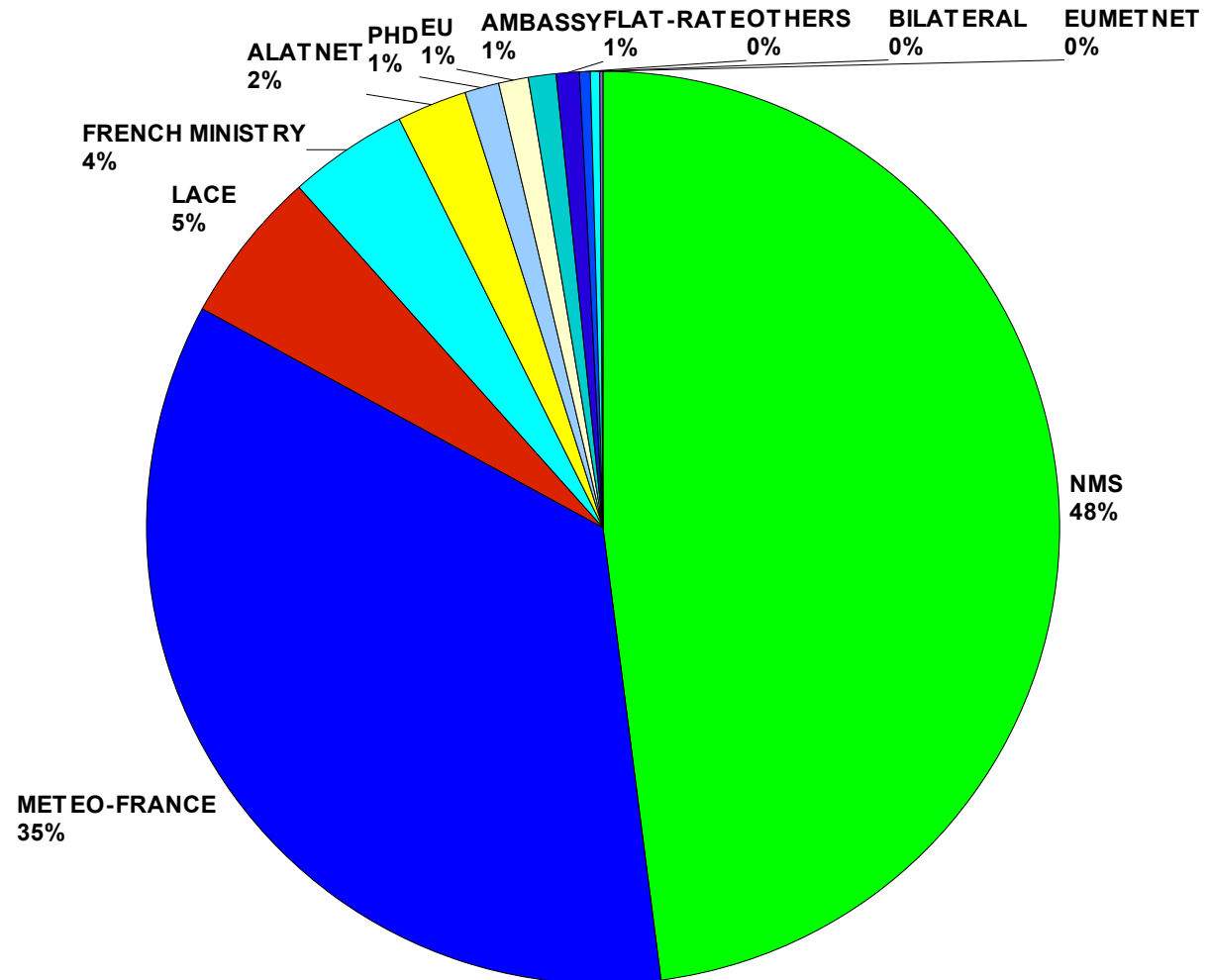


Flat-Rate
MF
LACE



Total participation in the ALADIN project

Breakdown
of the
person.months
by
money funding

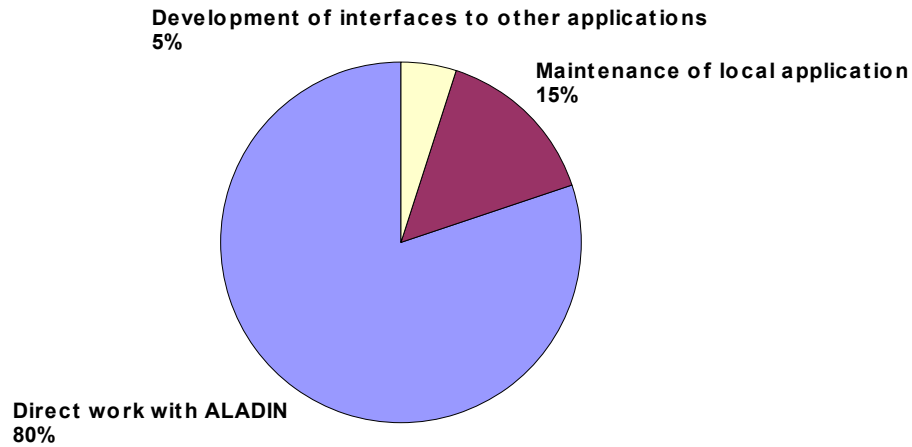


Updated on July 1, 2011



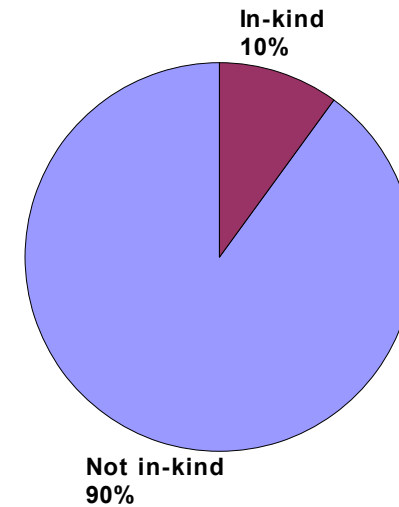
Breakdown of the ALADIN effort by activity

since July 2001



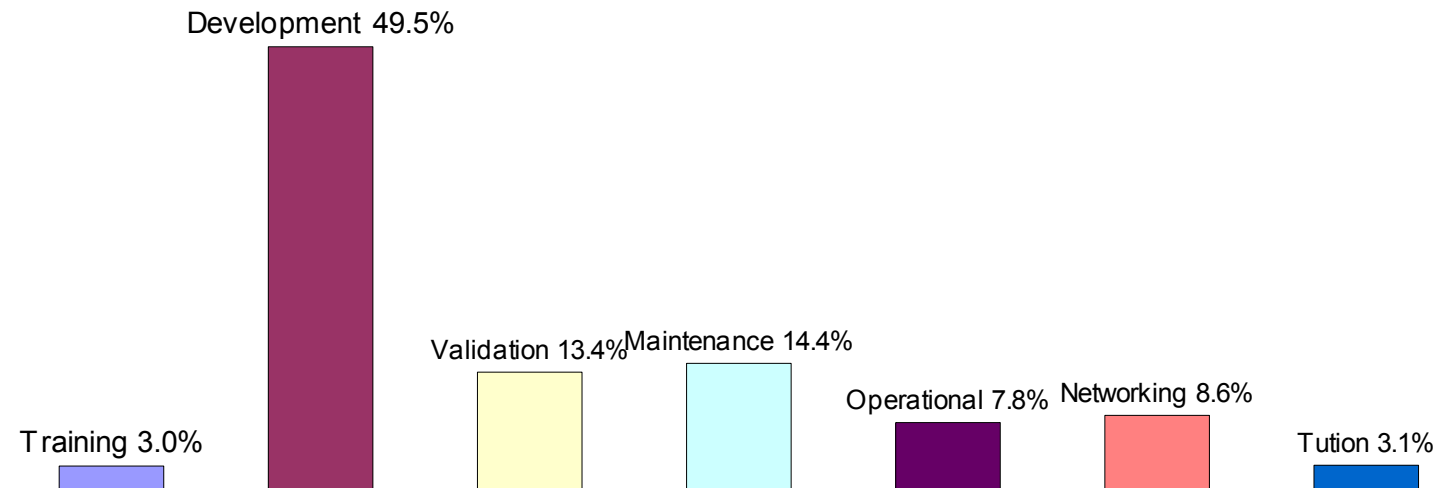
Part of "in-kind" in the ALADIN effort (manpower)

since January 2007



Breakdown of the ALADIN work by type

since July 2001



Updated on July 1, 2011