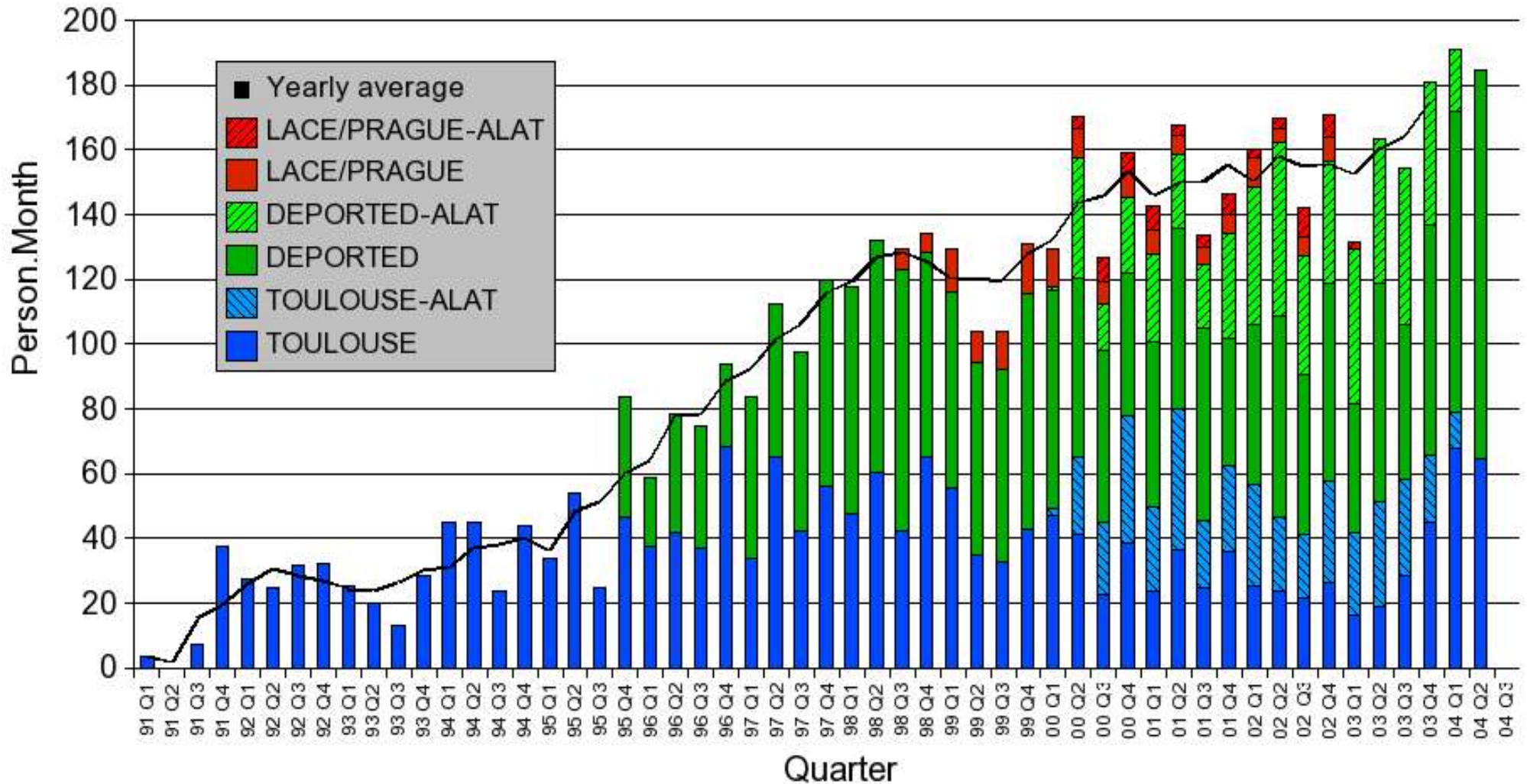


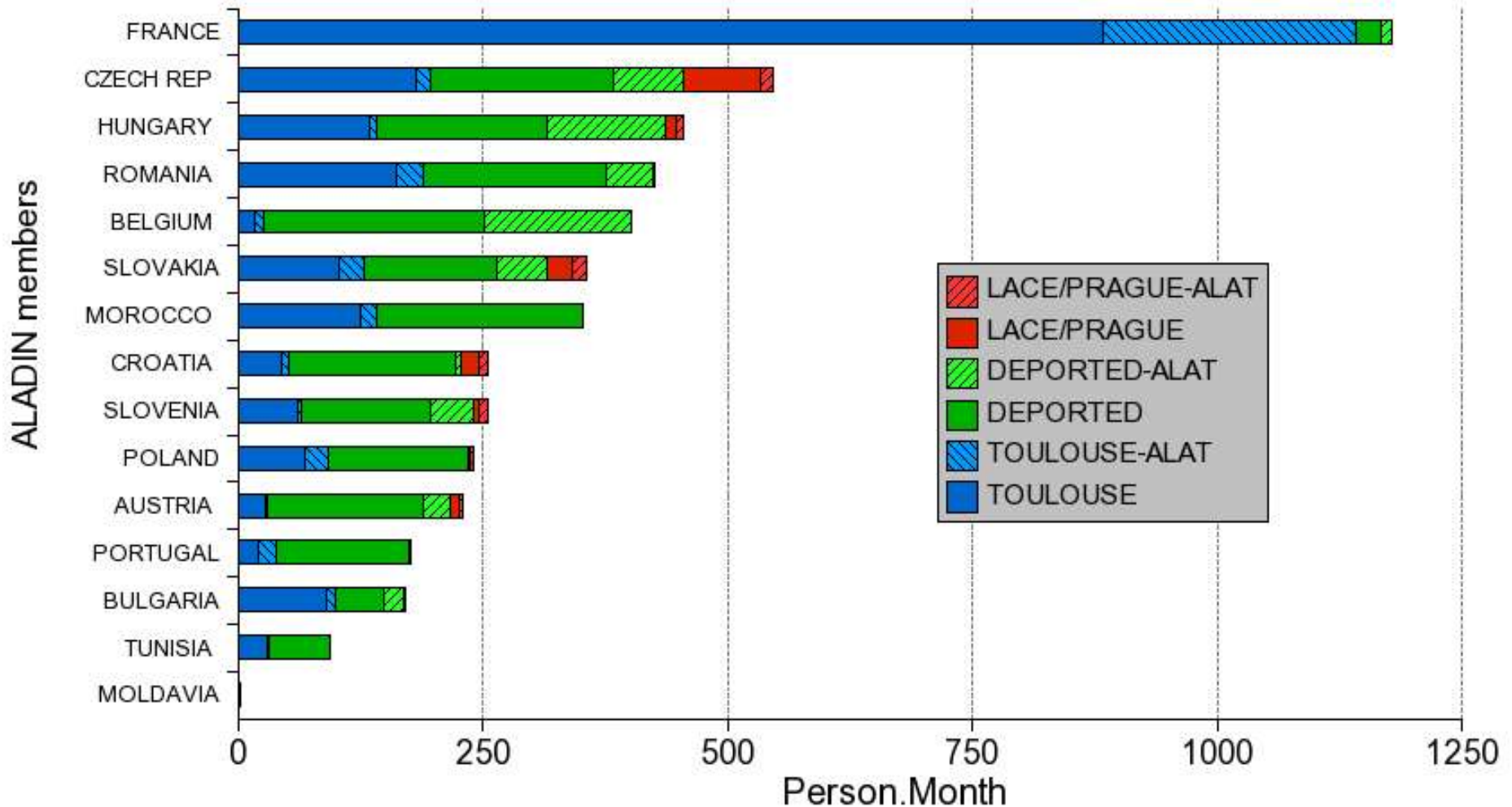
Total participation in the ALADIN project

Evolution of the quarterly manpower



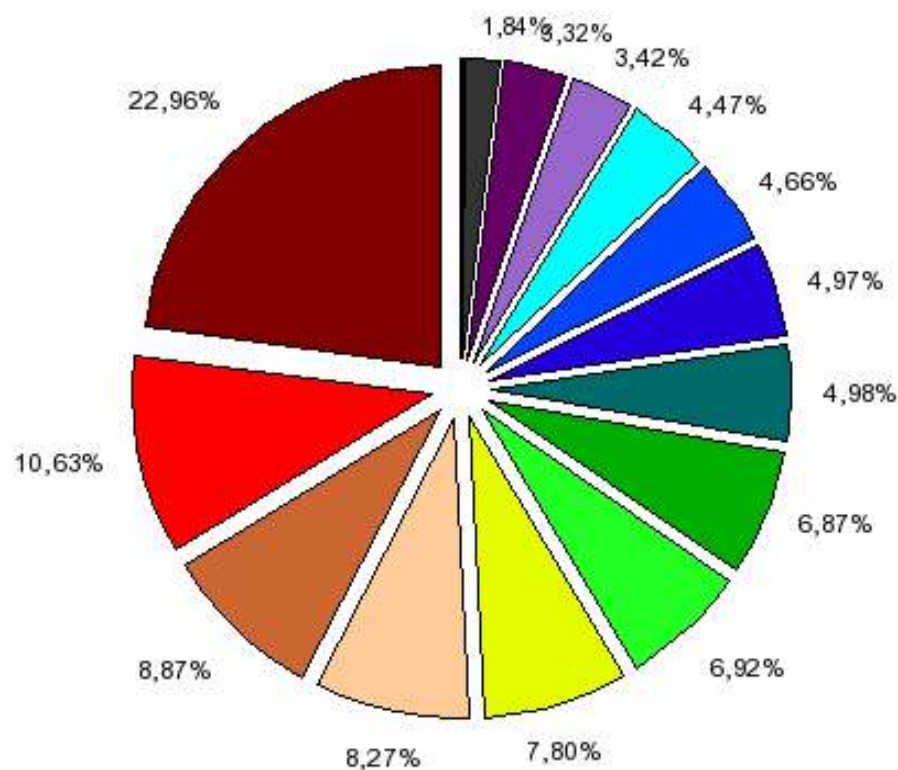
Total participation in the ALADIN project

Breakdown of the person.months by country



Total participation in the ALADIN project

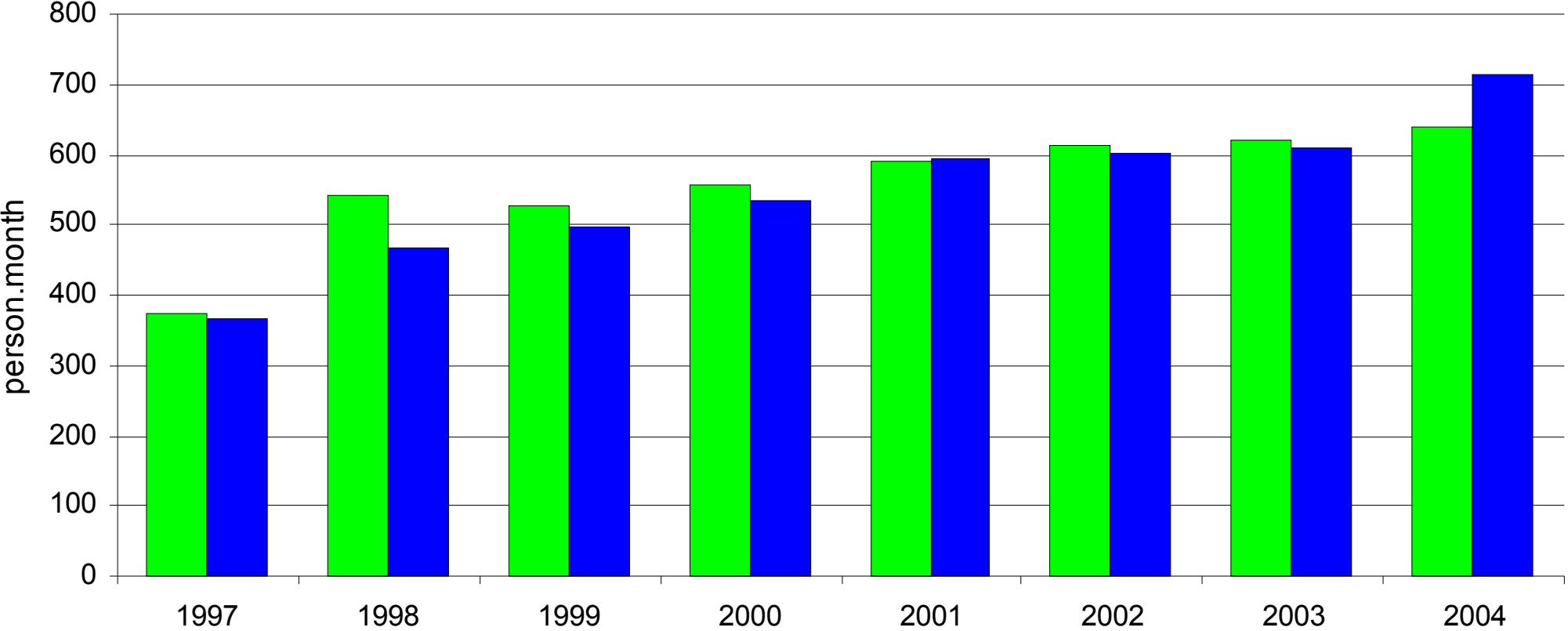
Breakdown of the person.months by country



FRANCE	CZECH REP	HUNGARY	ROMANIA	BELGIUM	SLOVAKIA	MOROCCO	CROATIA
SLOVENIA	POLAND	AUSTRIA	PORTUGAL	BULGARIA	TUNISIA	MOLDAVIA	

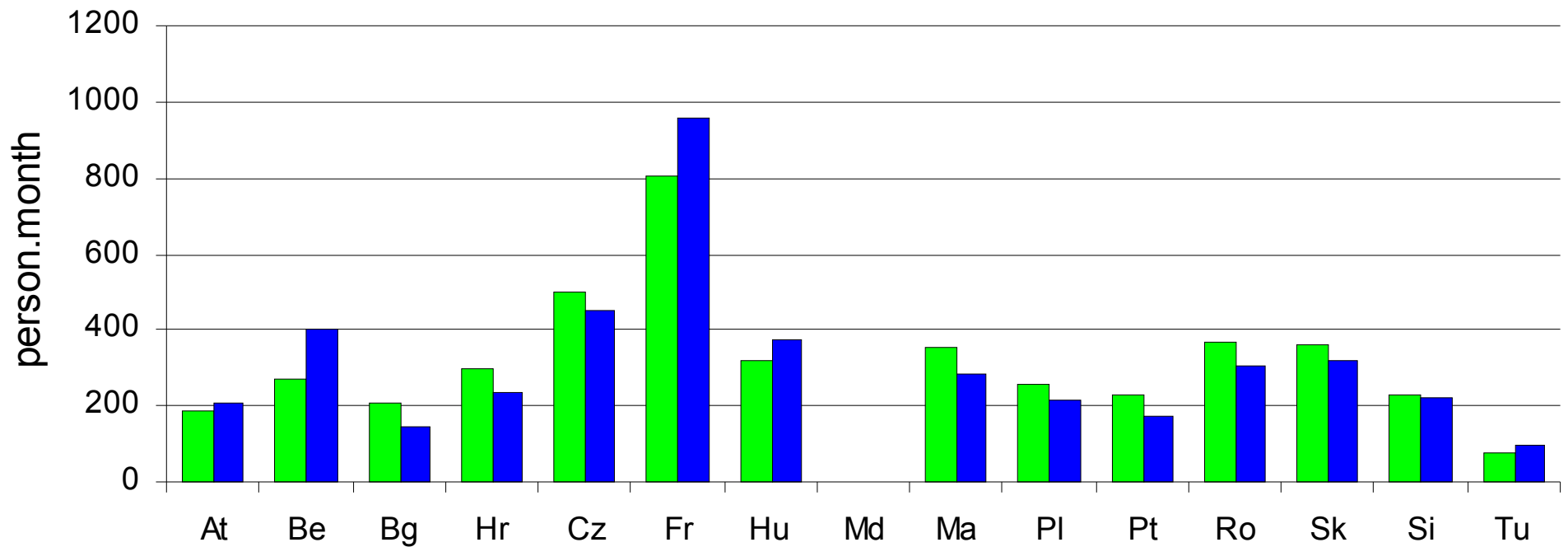
9th Assembly of ALADIN Partners, Split, October 29th-30th, 2004

■ Commitments ■ Realisation



For the period 1997-2004

■ Commitment ■ Realisation



9th Assembly of ALADIN Partners, Split, October 29th-30th, 2004

Cumulated Total Participation in the ALADIN Project

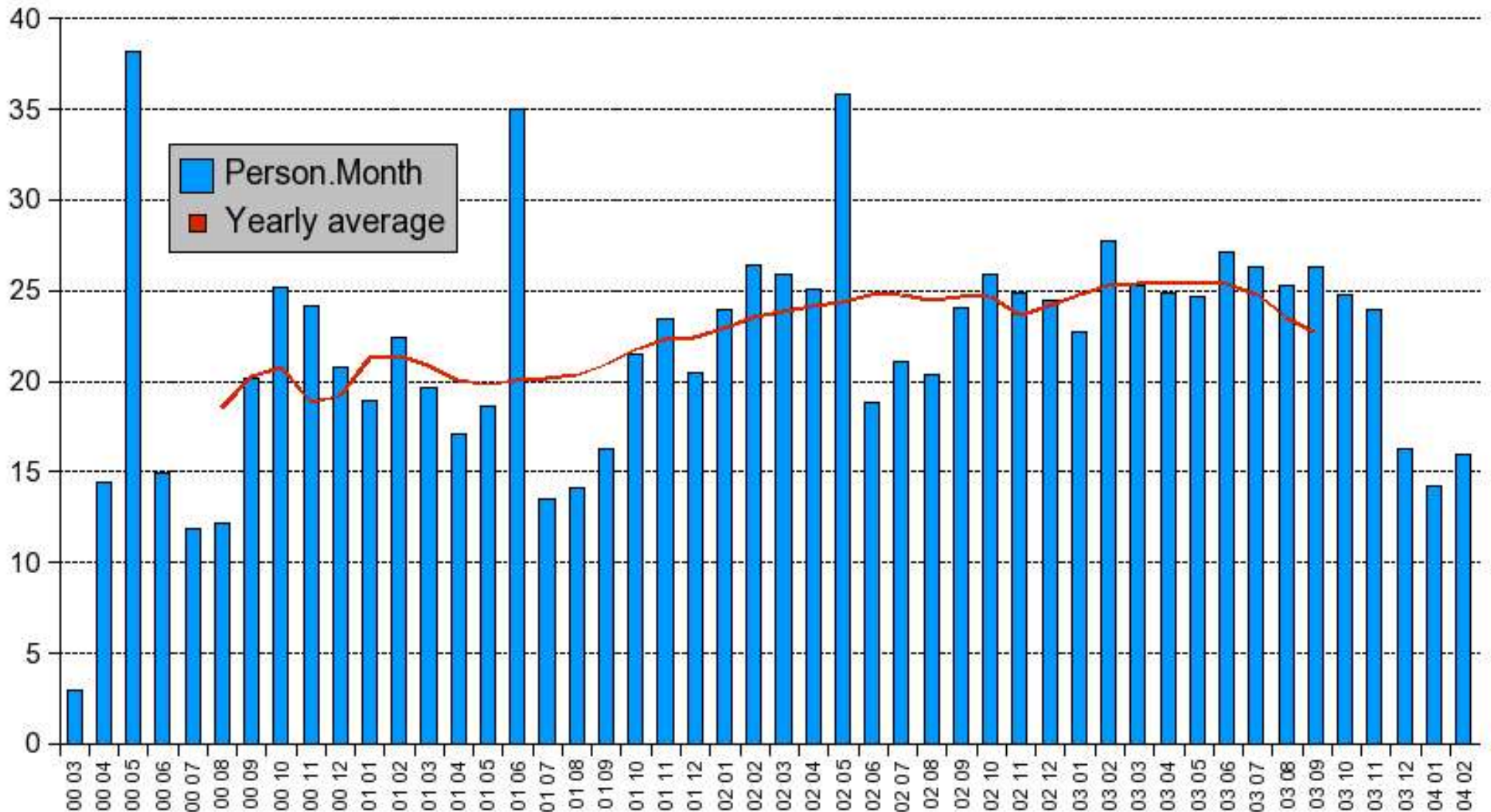
	MoU1(30/6/96)		MoU2(31/3/01)		Assembly 30/6/03)		Assembly 30/6/04)	
COUNTRY	Person.months	Breakdown	Person.months	Breakdown	Person.months	Breakdown	Person.months	Breakdown
FRANCE	217,0	30,9%	684,50	22,5%	973,75	22,0%	1178,25	23,0%
CZECH REP	94,0	13,4%	376,75	12,4%	500	11,3%	545,75	10,6%
HUNGARY	79,5	11,3%	251,00	8,3%	376,25	8,5%	455,25	8,9%
ROMANIA	107,5	15,3%	319,25	10,5%	390,25	8,8%	424,5	8,3%
BELGIUM	-	-	191,00	6,3%	334,25	7,6%	400,5	7,8%
SLOVAKIA	37,0	5,3%	214,25	7,1%	311,25	7,0%	355,25	6,9%
MOROCCO	64,0	9,1%	240,25	7,9%	317,25	7,2%	352,5	6,9%
CROATIA	14,0	2,0%	136,75	4,5%	214	4,8%	255,5	5,0%
SLOVENIA	26,5	3,8%	156,50	5,2%	225	5,1%	255	5,0%
POLAND	21,0	3,0%	147,00	4,8%	215,75	4,9%	239,25	4,7%
AUSTRIA	20,5	2,9%	98,00	3,2%	177,25	4,0%	229,5	4,5%
PORTUGAL	-	-	96,50	3,2%	158,75	3,6%	175,5	3,4%
BULGARIA	21,0	3,0%	114,75	3,8%	160	3,6%	170,25	3,3%
TUNISIA	-	-	8,50	0,3%	64	1,4%	94,25	1,8%
MOLDAVIA	-	-	1,00	0,03%	1,25	0,03%	1,25	0,02%
TOTAL	702,0	100%	3036	100%	4419	100,0%	5132,5	100,0%

ALATNET is finished (on 29/2/2004) after 4 eventful years

- Promised person x months = **1055**
- Realised person x months = **1047.5** (out of which the statutory **231** for our **12** Yong Researchers (Y.R.)
- Budget (**822 K€**) spent exactly with an average **3.2%** relative error on ‘big’ chunks. For each country the same figure varies from 3.1% to 8.7%
- No extra reliance on overheads (foreseen **107 K€**, spent **105 K€**)
- Total monthly cost for one Y.R. **2180€** (contract **2147€**)
- ALATNET cost for one month of support work **259€** (contract **266€**)
- **169** cross visits during the 4 years (~2 per possibility and per year)
- **2** PhDs already defended, **7** (hopefully) on their way
- Important results in NH-dynamics, 3D-Var, Coupling. Many other smaller positive steps

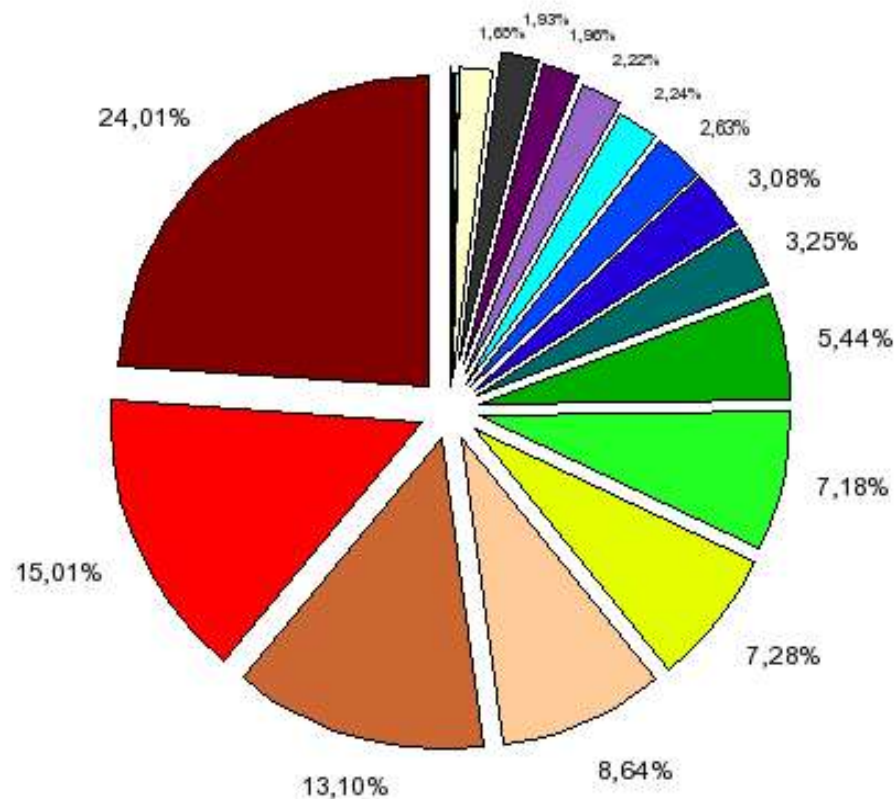
Participation in the ALATNET project

Evolution of the monthly manpower



Participation in the ALATNET project

Breakdown of the person.months by participants' nationality



Participation in the ALATNET project

Breakdown of the person.months by money funding

