

Verification working group

Sander Tijm et al.



Work done so far



Aim: collect “typical cases” of relevant (not extreme) weather, as “sanity check” for models

Status:

- Description of cases, coming in slowly (<http://www.knmi.nl/~tjtm/Verif/Verifwork.html>)
- How to verify
- Necessary observations

- No further work, still waiting for some cases
- No collection of verification tools, no reference runs made, no baseline verification yet.

Hiram Questions



- Is work for this group not urgent enough?
- Is it not interesting enough?
- Is it organized wrongly?
- Is it too distributed?

- Small group doing the actual work better?
- Concentrate on few areas with many (special) observations?

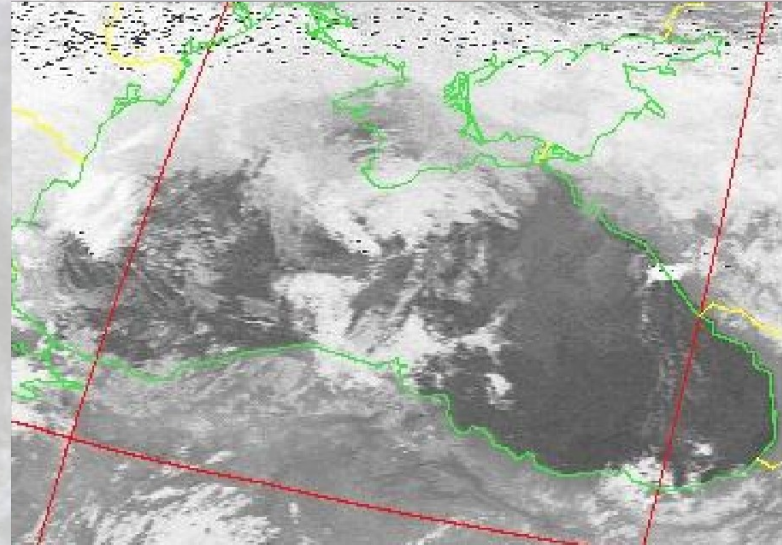
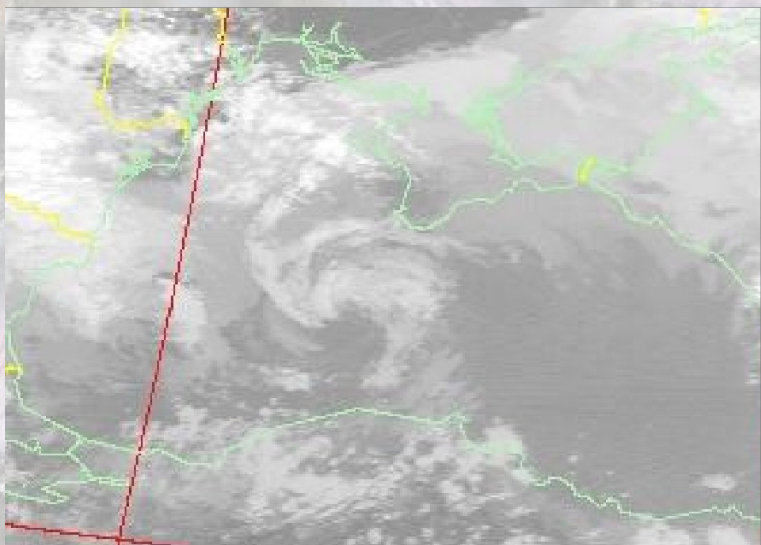
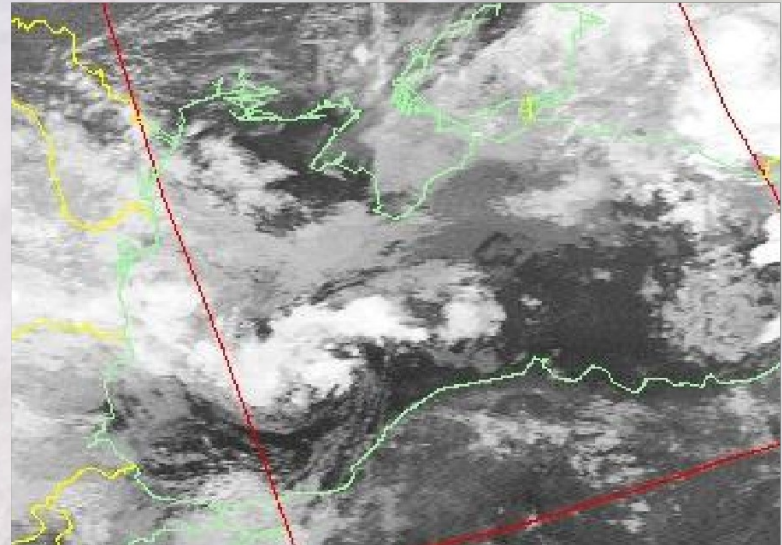
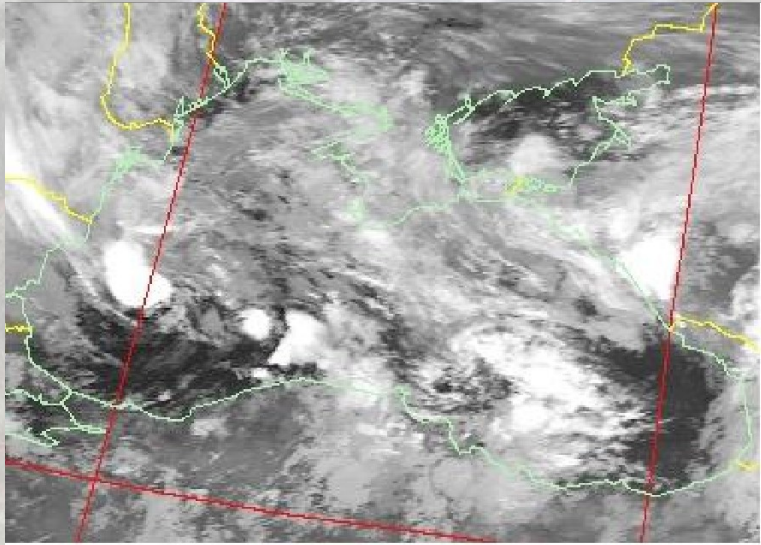
HirLAM Cases described

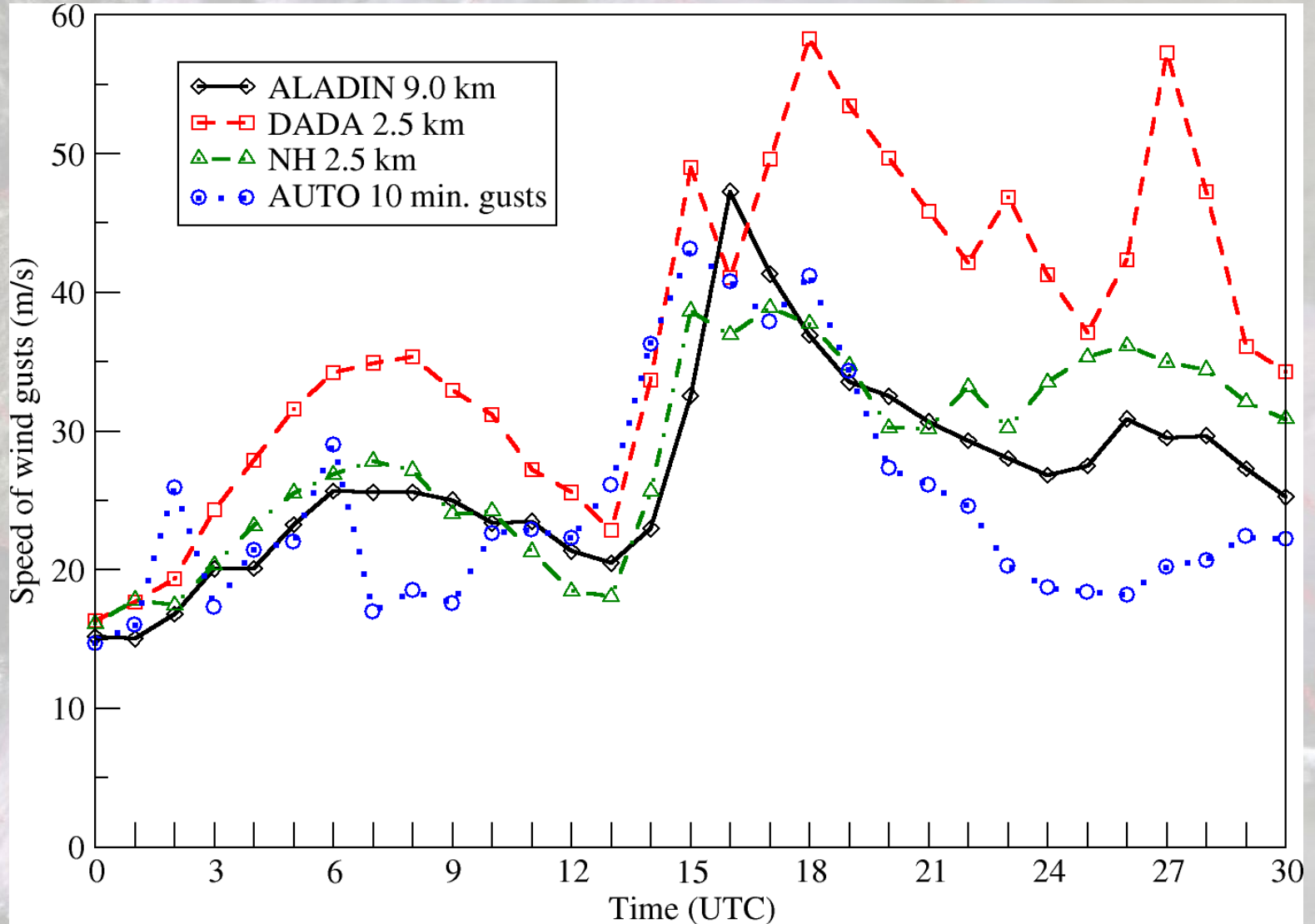


- Very stable PBL
- Low clouds/fog
- Shallow convection
- Deep convection
- Orographic effects
- Cyclone development
- Lake impact

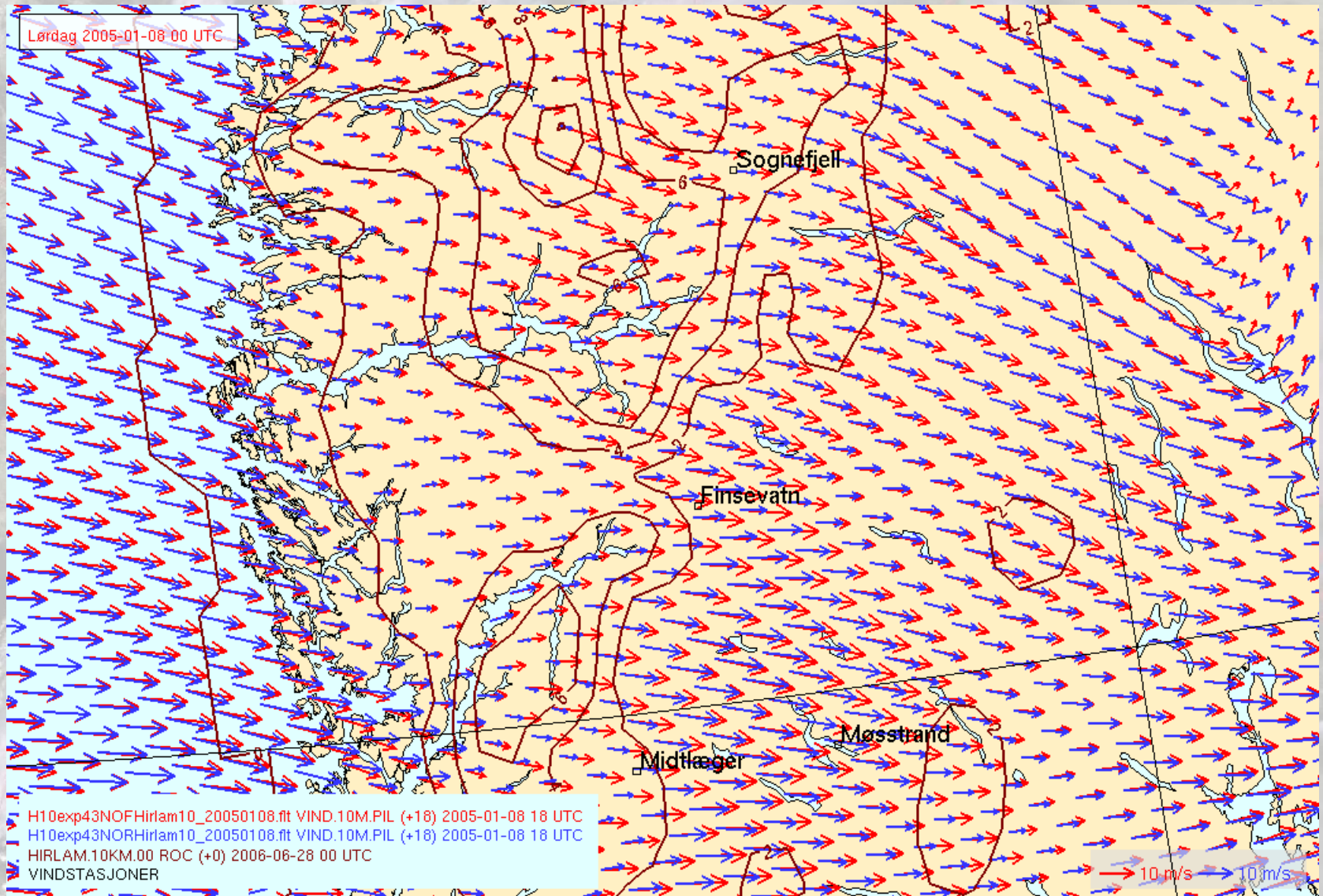


Cyclone development (20030912)

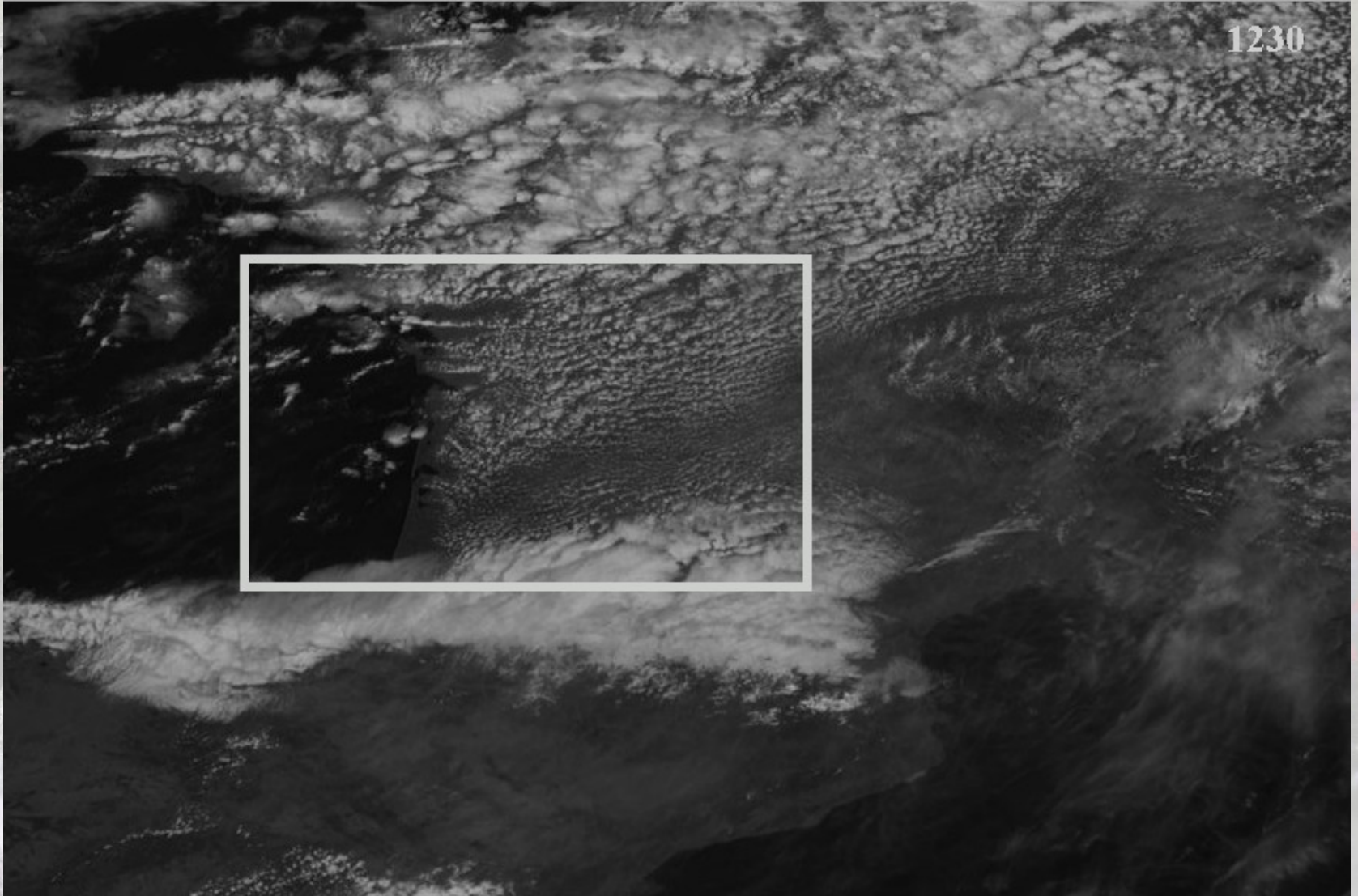




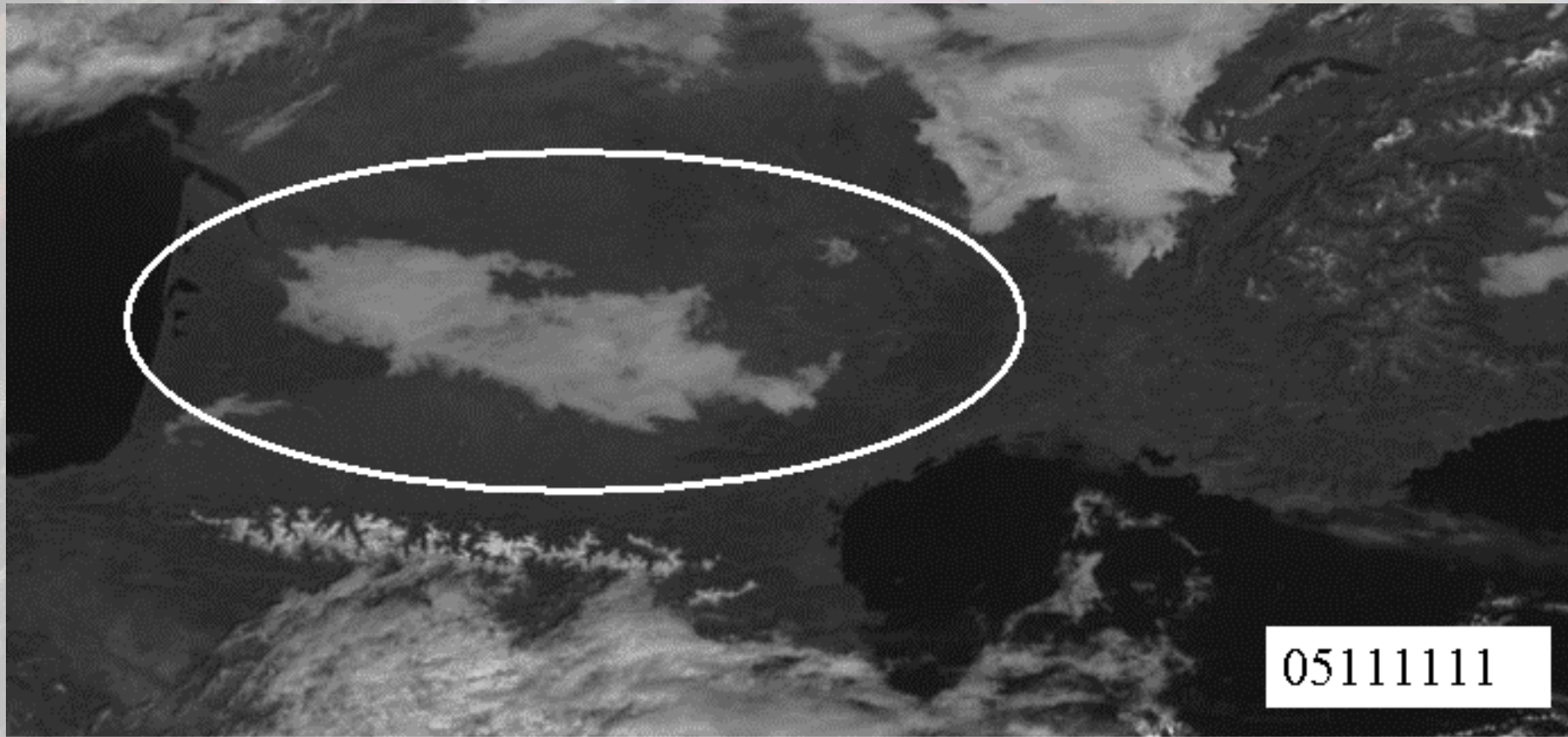
Orographic impact (20050108)



1230



Hir/lam Fog (20051111)



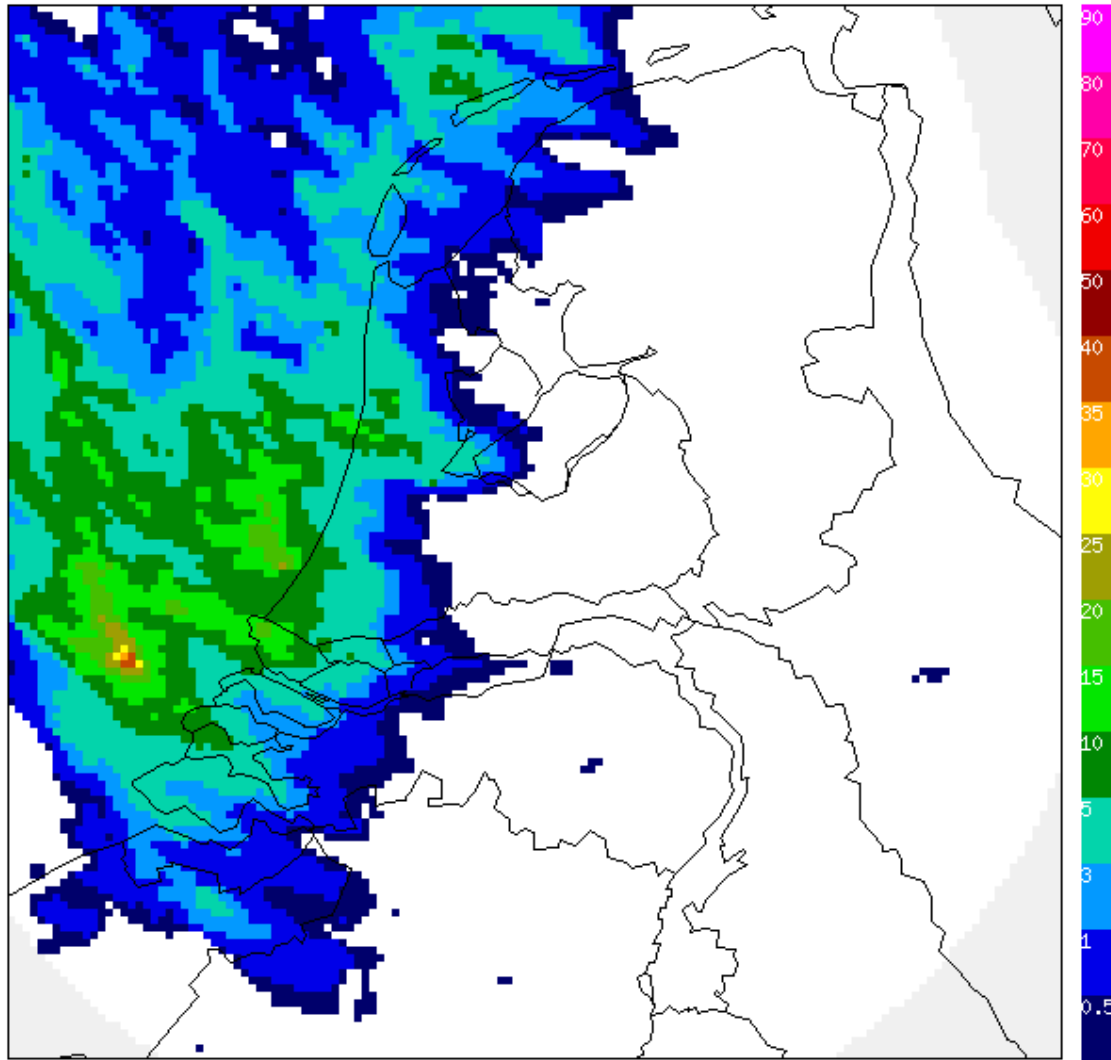
05111111



Convection (20051128)

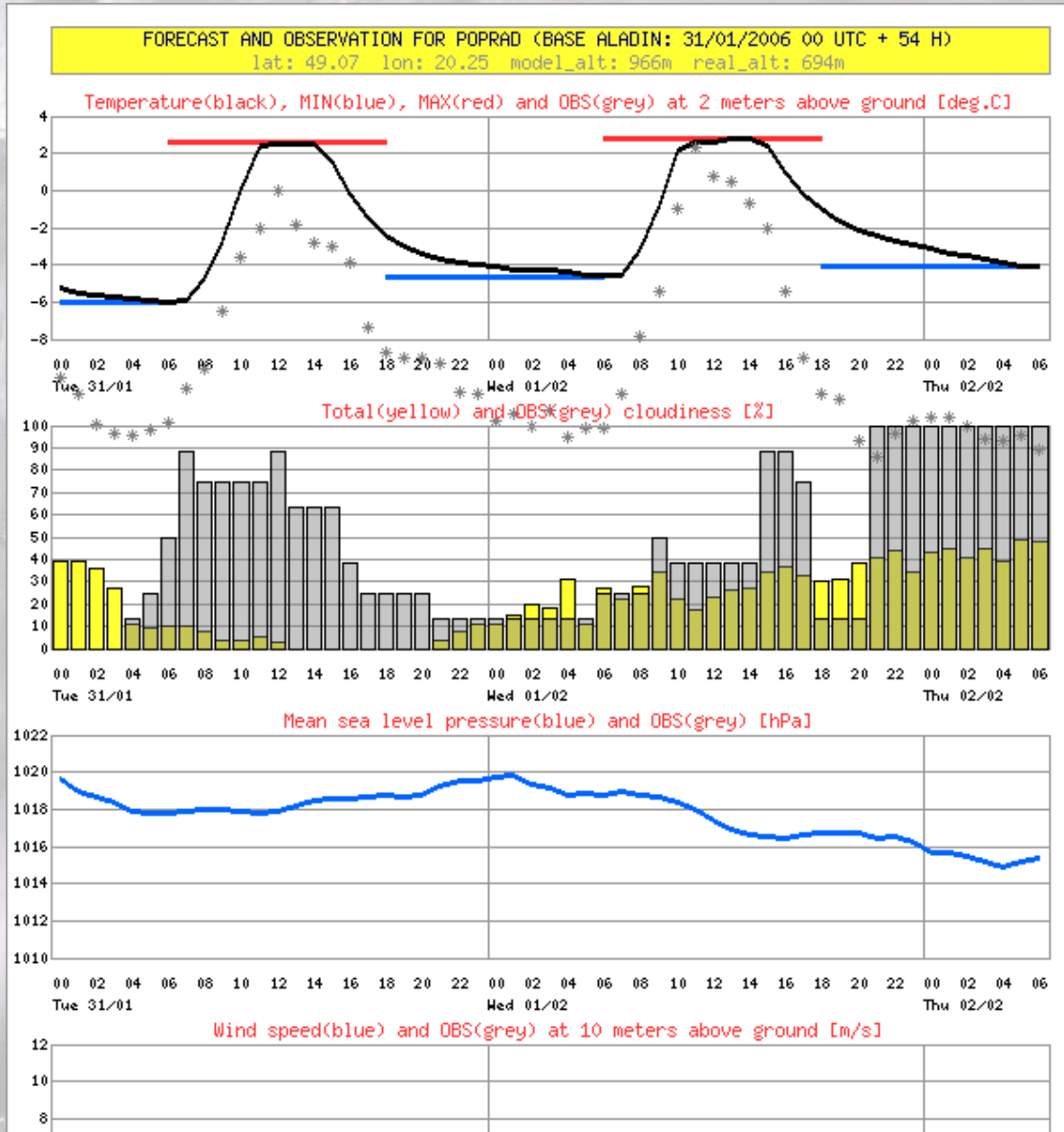


0800 UTC 20051128 - 0800 UTC 20051129



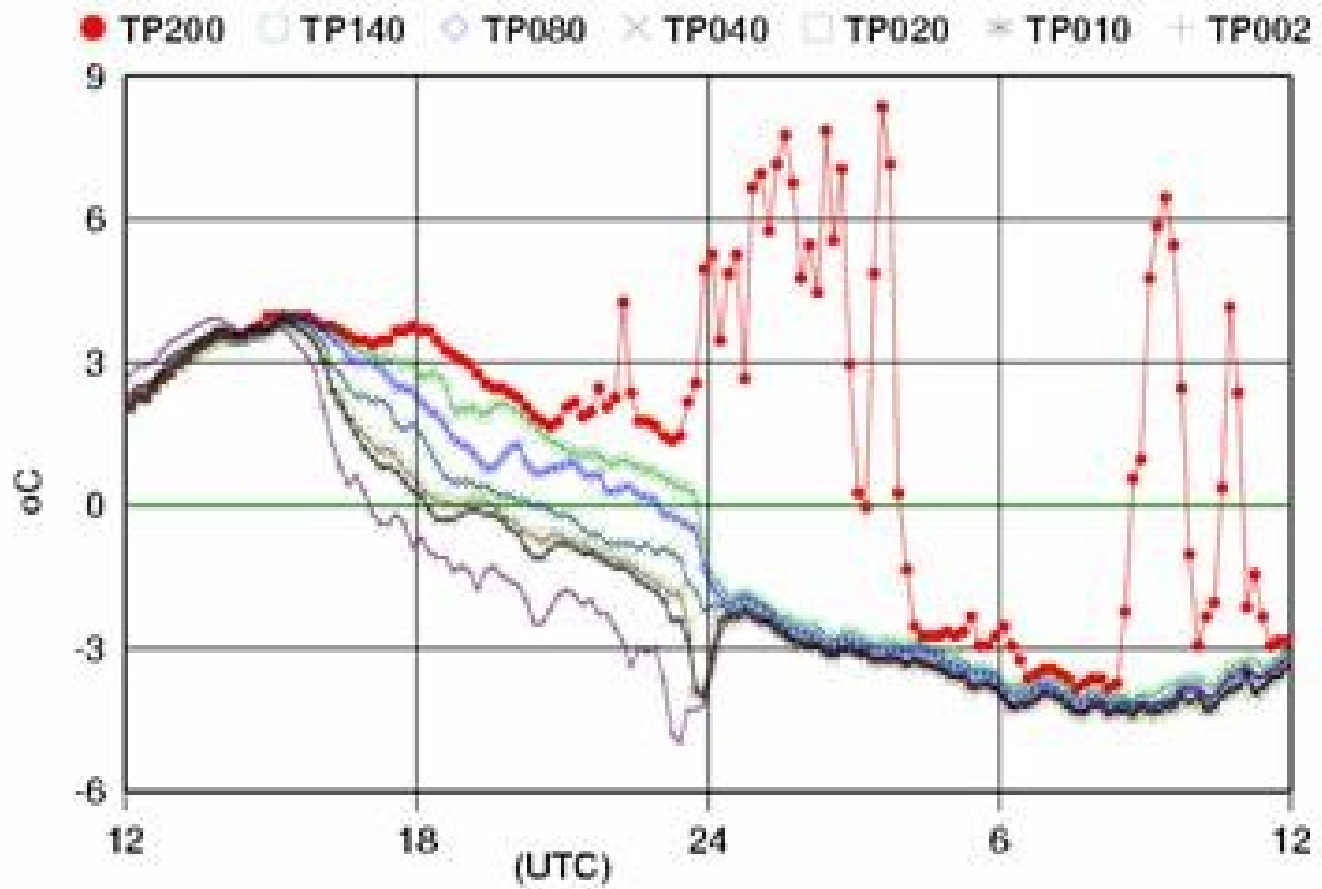


Stable PBL (20060131)





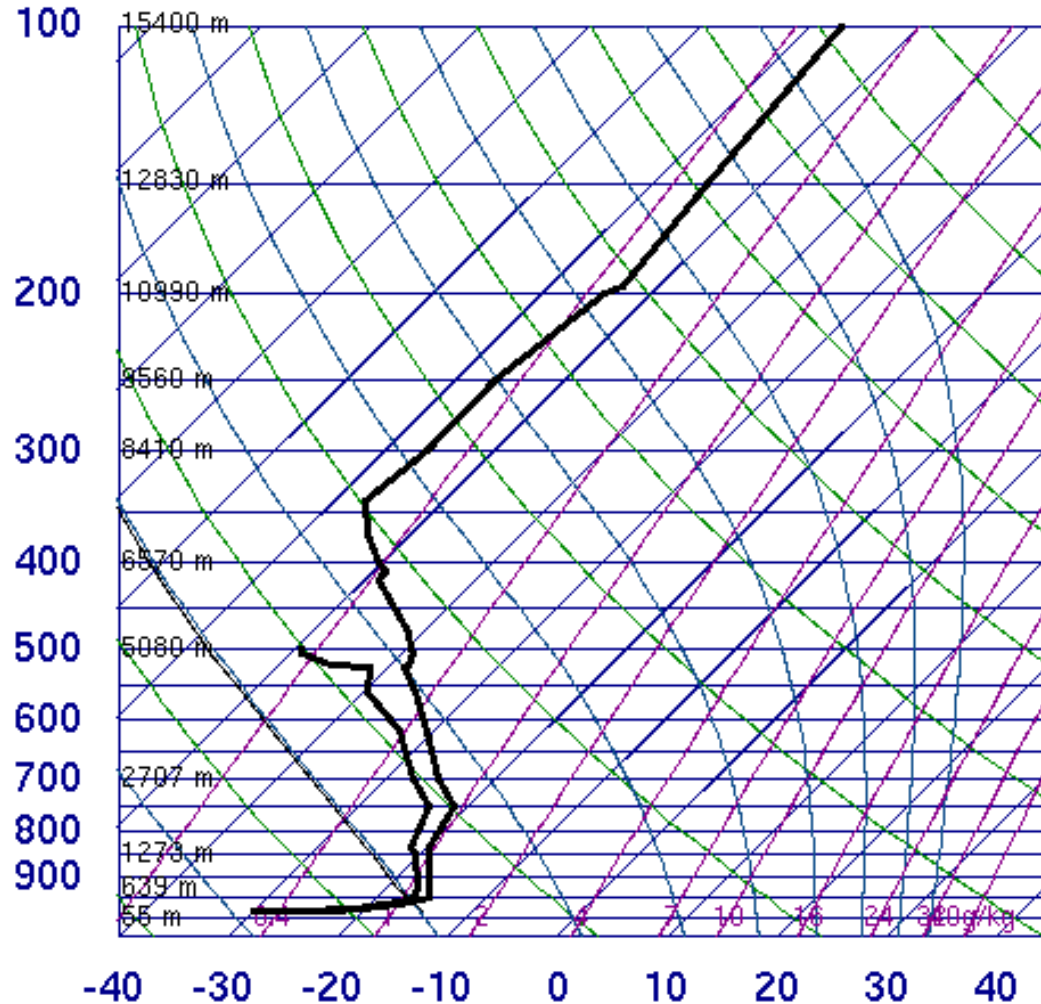
Potentiele temperatuur



Stable PBL (20060306)



02836 EFSO Sodankyla

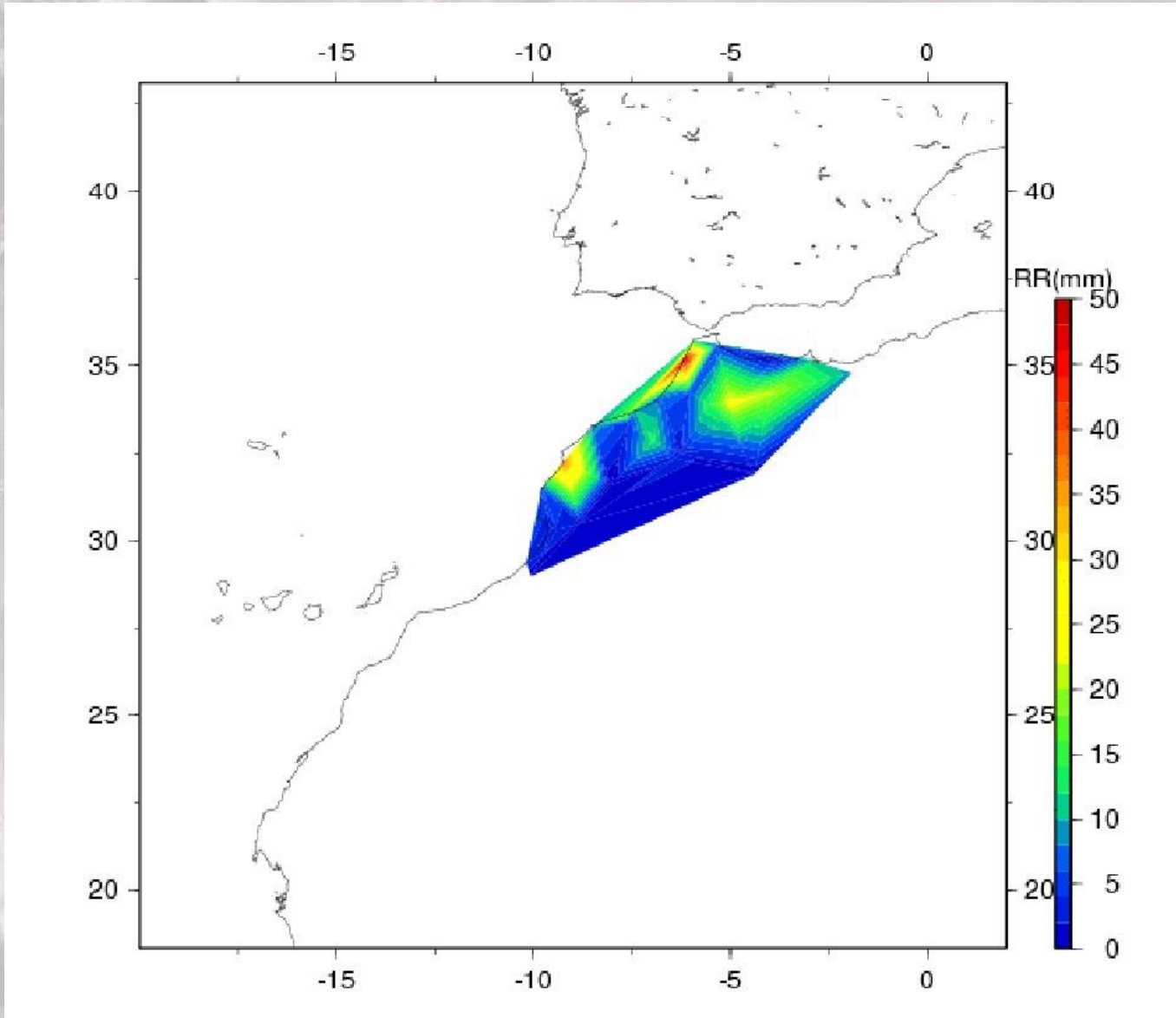


✓	SLAT	67.36
✓	SLON	26.65
✓	SELV	179.0
✓	SHOW	13.39
✓	LIFT	18.45
✓	LFTV	18.46
✓	SWET	31.00
✓	KINX	-2.40
✓	CTOT	19.00
✓	VTOT	20.40
✓	TOTL	39.40
✓	CAPE	0.00
✓	CAPV	0.00
✓	CINS	0.00
✓	CINV	0.00
✓	EQLV	-9999
✓	EQTV	-9999
✓	LFCT	-9999
✓	LFCV	-9999
✓	BRCH	0.00
✓	BRCV	0.00
✓	LCLT	254.7
✓	LCLP	933.7
✓	MLTH	259.7
✓	MLMR	0.98
✓	THCK	5025.
✓	PWAT	3.19

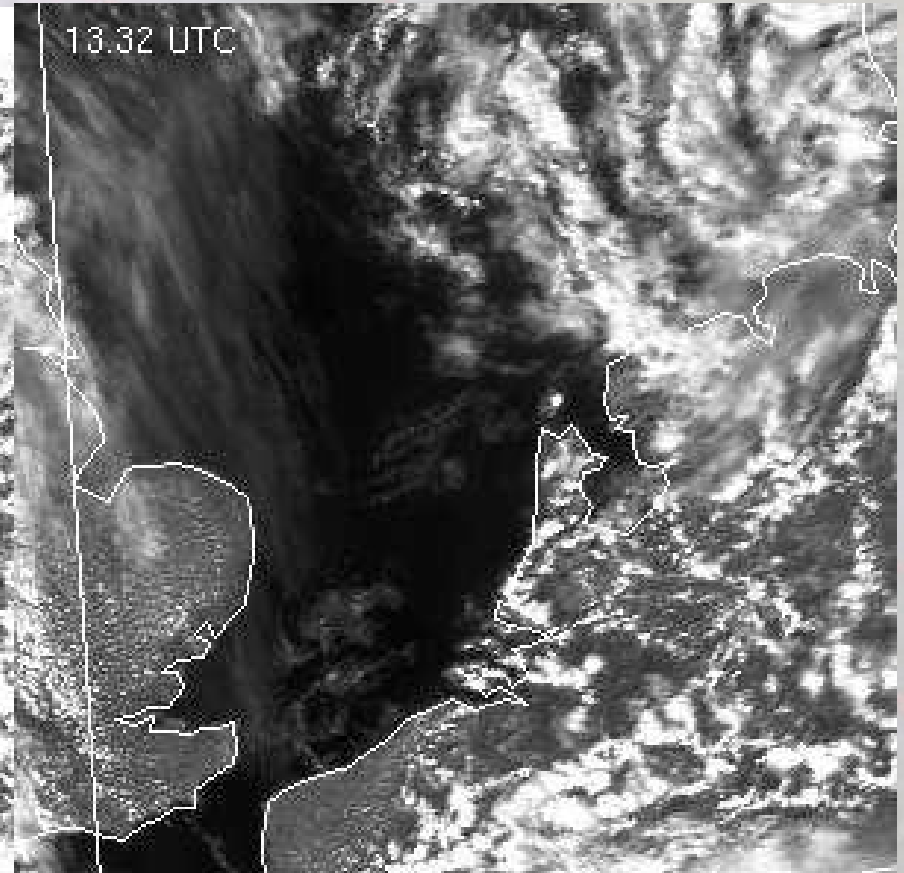
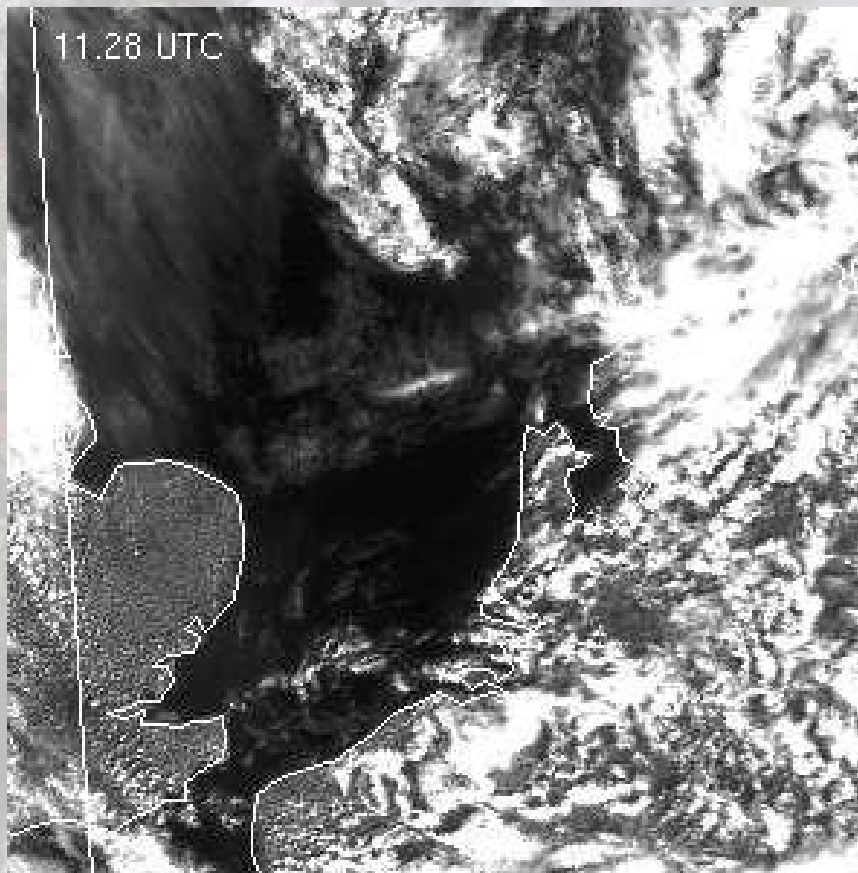
00Z 06 Mar 2006



Orographic impact (20060320)



HirLAM Convection (20060430)



Lake impact (20060927)

