

RC LACE Status 2012

Dijana Klarić
RC LACE Program Manager

www.rclace.eu

RC LACE Status 2012

- Decisions from 34th RC LACE Council meeting
- Reports on RC LACE Actions 2011-2012
- Plans 2013 and further
- Quality of operative models & human power

Decisions on :

❖ **RC LACE MoU IV signed 13th November 2012**

4 year Program 2013-2016

4 areas of R&D - D&C, Ph, DA, Pred

New RC LACE Management Group

- Program Manager: Yong Wang (Au)
- Area Leader for Dynamics and Coupling: **Petra Smolikova (Cz)**
- Area Leader for Data Assimilation: **Roger Randriamampianina (Hu)**
- Area Leader for Physics: **Neva Pristov (Si)**
- Area Leader for Predictability: **Teresa Gorgas (Au)**
- LACE Aladin System Coordinator: **Oldrich Spaniel (Sk)**
- Data Manager: **Alena Trojakova (Cz)**

Decisions on :

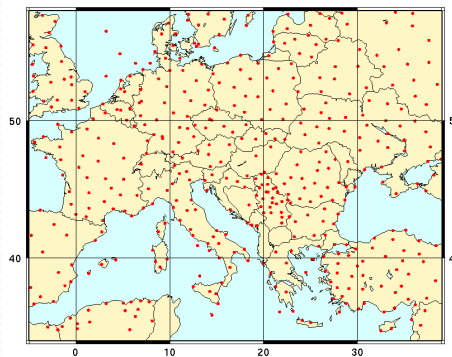
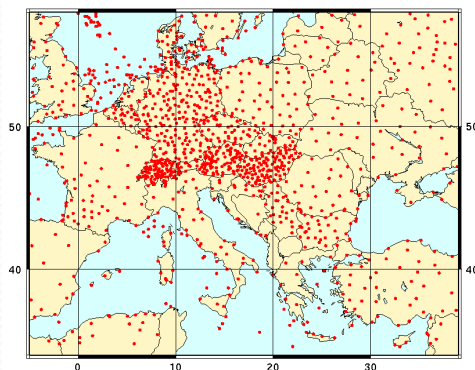
- ❖ **RC LACE R&D long-term topics and deliverables**
 - review of 2012 R&D execution, status of 2012 deliverables
 - in 2012 - **24personxmonths** financed by LACE
- ❖ **Plan for 2013**
- ❖ **Yearly plans , 3Year Projects**
 - total plan **147.25 person x month efforts**
 - **24personxmonths** financed by LACE
 - deliverables for 2013 and associated Budget
 - working days: **LACE Data Assimilation**
- **3Year Projects- Dynamical core in sub-kilometric scales**
plans : ALARO, DA, kilometric scale EPS

Decisions on RC LACE Budget:

Option **131,202.90 €** *same level as in 2012

Decisions on

- ❖ **National data exchange Data Policy document (in 2013)**
- ❖ **OPLACE – filter for essential data only for A-H users**



ALARO physics, different initialization

- operational:
 - At, CANARI assimilation cycle (cy35t1, 4.8 km)
 - Cz, CANARI+Blending assimilation cycle (cy36t1, 4.7 km)
 - Hr, 3D Var +CANARI data assimilation (cy32t3, 8 km)
CANARI initialization with 0 (cy36t1, 2 km)
 - Hu, 3D Var + CANARI data assimilation (cy35t1, 8 km)
in ensemble system
 - Ro, CANARI initialization with 0 (cy36t1, 6.5 km)
 - Si, 3D Var +CANARI data assimilation (cy35t1, 4.4 km)
 - Sk, CANARI+ Blending assimilation cycle (cy36t1, 9 km)
- In preparation:
 - Sk, new domain (~3.3 km, ~60 levels)

- Quality of LACE against other LAM model, SRNWP-V Program

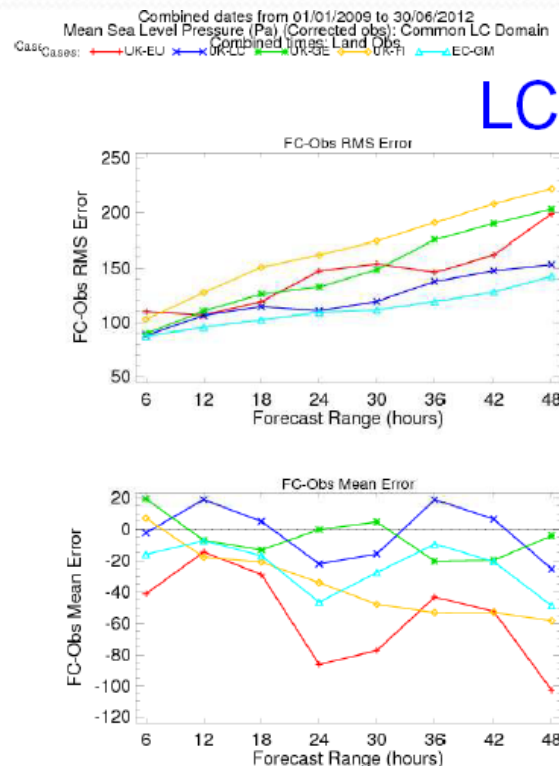


Sea level
Pressure

ALADIN-
LACE
domain

Mean 01/2009-
06/2012

EWGLAM 2012 © Crown copyright Met Office



LACE – blue
ECMWF – light blue
COSMO – yellow
UKMO – red
HIRLAM – green

Model quality

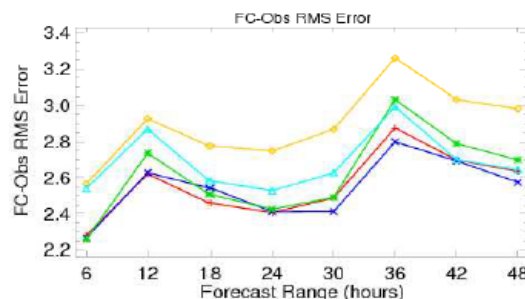
Quality of LACE against other LAM model, SRNWP-V Program



10m vector
wind rmse
ALADIN-
LACE
domain

Combined dates from 01/01/2009 to 30/06/2012
Vector Wind (m/s) (Corrected obs): Common LC Domain: Combined times
Cases: UK-EU UK-LC UK-GB UK-FI EC-GM

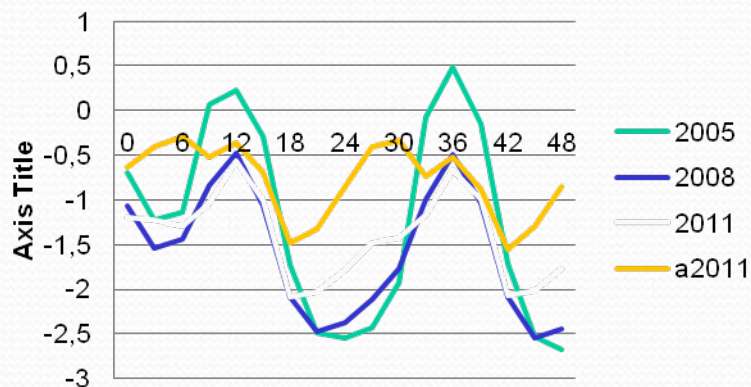
LC



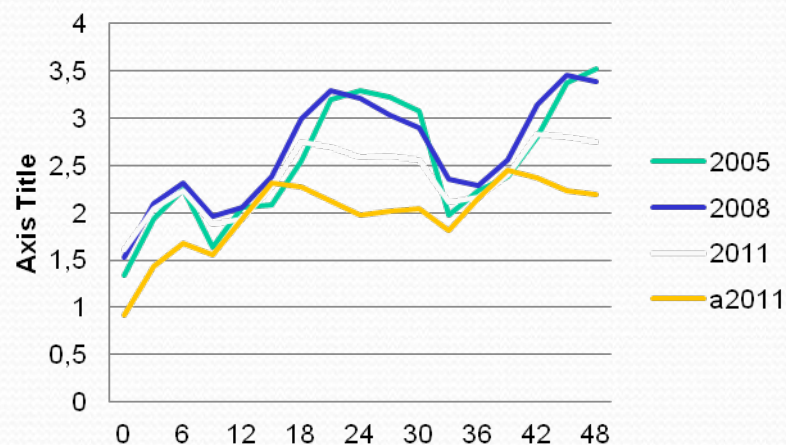
LACE – blue
ECMWF – light blue
COSMO – yellow
UKMO – red
HIRLAM – green

Model quality 2005-2008-2011

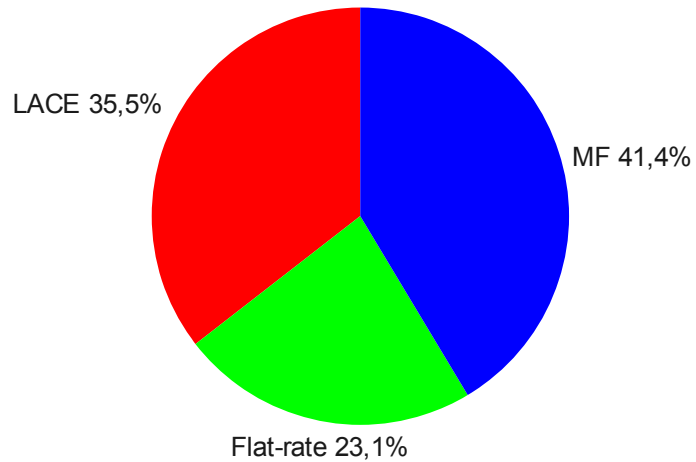
**Ljubljana
t2m Bias ALADIN/SI**



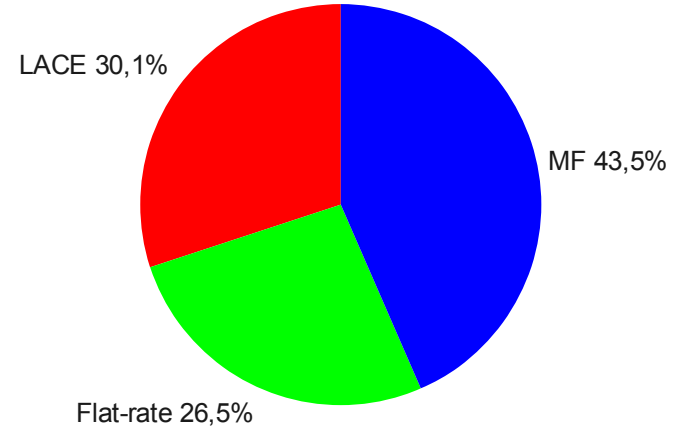
**Ljubljana
t2m Rmse ALADIN/Si**



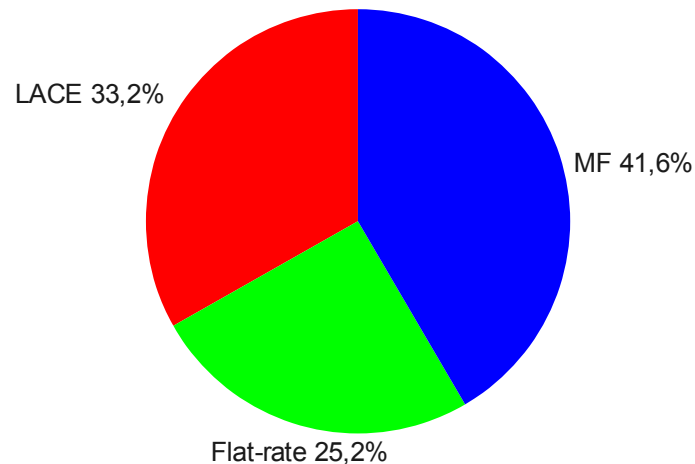
Breakdown of the 2007 manpower



Breakdown of the 2011 manpower



Breakdown of the 2007-2011 manpower



Thank you

