

Governance issues

ALADIN Consortium



General Assembly (GA)

supreme governing body of the ALADIN Consortium

Chairperson : Klemen Bergant (Si)

Vice-Chairperson : Abdalah Mokssit (Ma)

Director of each of the Members (Dz, At, Be, Bg, Hr, Cz, Fr, Hu, Ma, Pl, Pt, Ro, Sk, Si, Tn, Tr)
Observers from HIRLAM and ECMWF

Program Manager (PM)

main executive officer of the ALADIN Consortium
Piet Termonia (Be)

« Bureau »

GA chairperson, PAC chairperson, CSSI chairperson, PM

Policy Advisory Committee (PAC)

advisory body

Chairperson : Adérito Serrão (Pt)

Vice-Chairperson : Michael
Staudinger (Au)

2 MF Members :

- Philippe Bougeault (Fr)
- Alain Joly (Fr)
(subst. Gwenaëlle Hello)

2 RC-LACE Members :

- Radmila Brozkova (Cz)
- Vladimir Pastircak (Sk)
(subst. Miklos Voros (Hu))

2 Flat-rate Members :

- Abdalah Mokssit (Ma)
- Maria Monteiro (Pt)
(subst. Fatih Buyukkasabbasi (Tr))

Observers :

- LACE Project Leader
- Chairperson of CSSI
- Chairperson of HIRLAM Advisory
Committee

Programme Team

Local Team Managers

Dz : Abdelhak Razagui
At : Christoph Wittmann
Be : Alex Deckmyn
Bg : Valery Spiridonov
Hr : Alica Bajic
Cz : Radmila Brozkova
Fr : Claude Fischer
Hu : Laszlo Kullmann
Ma : Hassan Haddouch
Pl : Marek Jerczynski
Pt : Maria Monteiro
Ro : Doina Banciu
Sk : Martin Benko
Si : Neva Pristov
Tn : Abdelwaheb Nmiri
Tr : Ersin Kucukkaraca

Project Team

all manpower committed by Members and acceding Members

Committee for Scientific and System/maintenance Issues (CSSI)

Chairperson : Claude Fischer (Fr)

Coordination for networking and interoperability : ????

Data assimilation : Claude Fischer

Dynamics and LBC coupling : Pierre Bénard

Maintenance : Ryad El Khatib

Numerical efficiency issues : Martina Tudor

Observations and Monitoring : Alena Trojakova

Physics : Filip Vana

Predictability and LAM EPS : Alex Deckmyn

Surface : Jean-François Mahfouf

Verification : Marek Jerczynski

Responsible Member for LAM Climate : Ales Farda

Responsible Member for Nowcasting : Yong Wang

Support Team

Consortium level cooperation
support (LACE) :

Dijana Klaric

Consortium level cooperation
support (MF) :

Claude Fischer

Documentation officer :
????

Information officer :
Maria Derkova

Administration and PM assistance :
Patricia Pottier

Secretarial support :
Jean Maziejewski

Task Force 1

Coordinator :

Task Force 2

Coordinator :

Task Force 3

Coordinator :

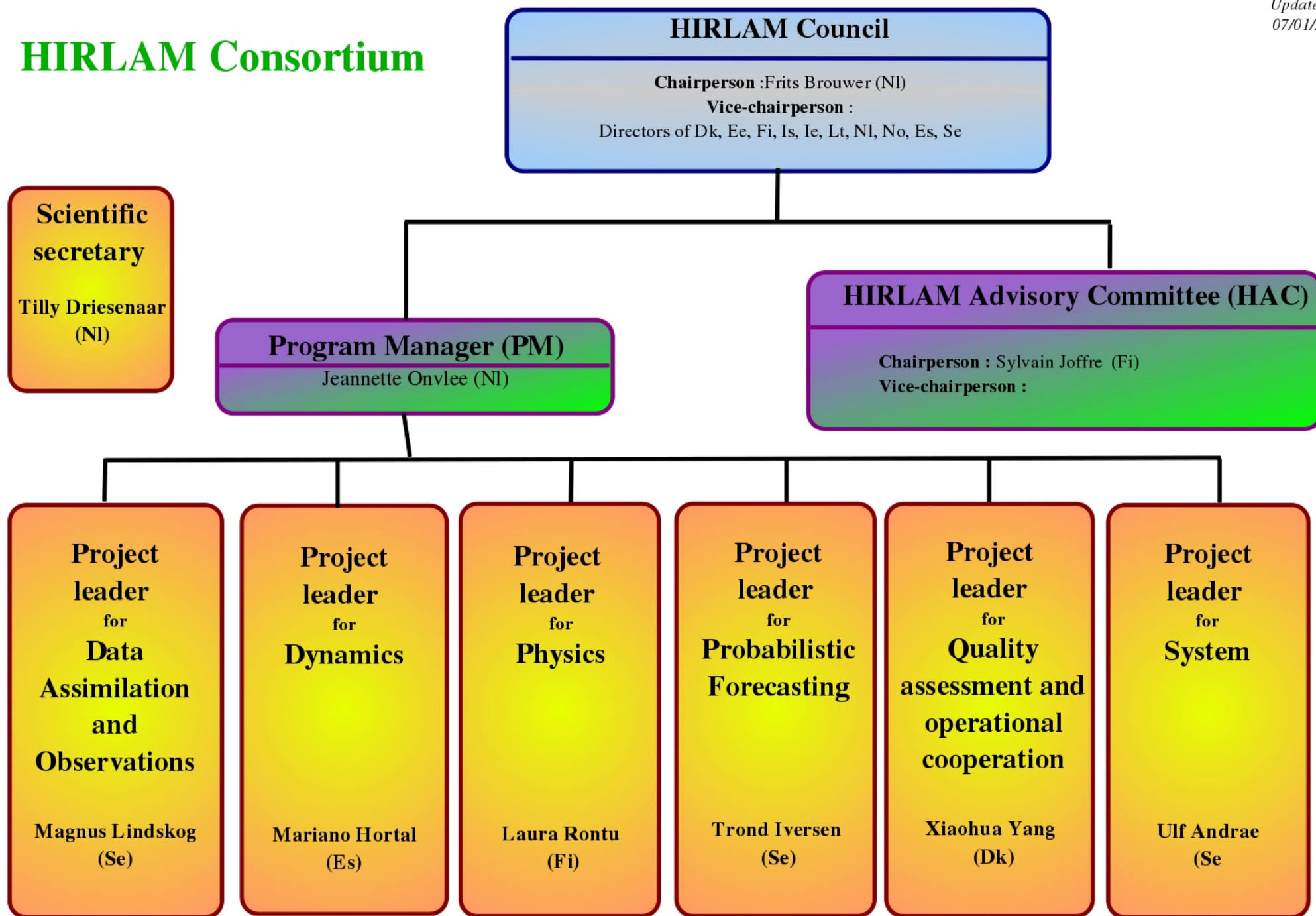
HIRLAM Consortium

Chairperson of HAC : Sylvain Joffre (Fi)
HIRLAM PM : Jeanette Onvlee (Ni)

CNRM/GMAP
Patricia Pottier
on 07/01/11

HIRLAM Consortium

Updated on
07/01/2011



Potential for team integration in different areas

Data assimilation:

Surface:

Dynamics:

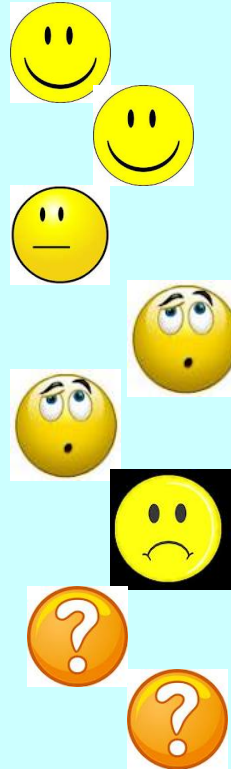
Upper air physics:

Probabilistic forecasting:

Verification:

System aspects:

Downstream applications:



CSSI composition

- * Chairperson* : Claude Fischer
- * Coordination for networking and interoperability and ACNA : ????
- * Data assimilation : Claude Fischer
- * Dynamics and LBC coupling : Pierre Bénard
- * Maintenance : Ryad El Khatib
- * Numerical efficiency issues : Martina Tudor
- * Observations and Monitoring : Alena Trojakova
- * Physics : ???
- * Predictability and LAM EPS : Alex Deckmyn
- * Surface : Jean-François Mahfouf
- * Verification : **Marek Jerczynski**
- * Responsible members for two parallel emerging activities (Nowcasting and LAM-Climate -or, more exactly in the second case, long integrations' problematic-) have been included in the above structure :
 - o LAM-Climate : Ales Farda
 - o Nowcasting : Yong Wang