



General Assembly

P. Termonia,
CSSI Chair
12-13/11/2009, Istanbul

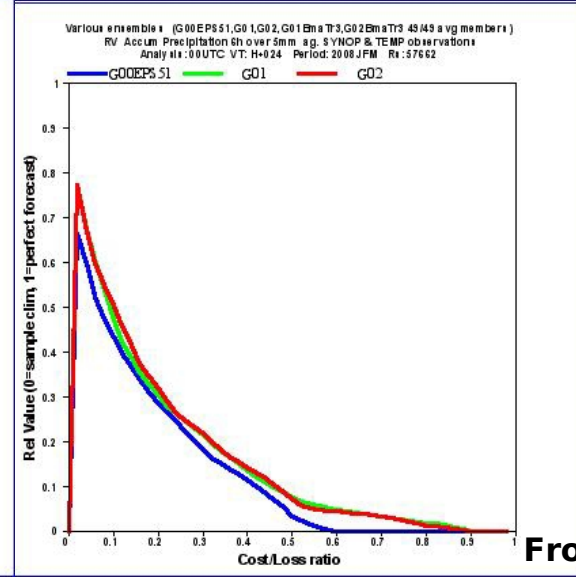
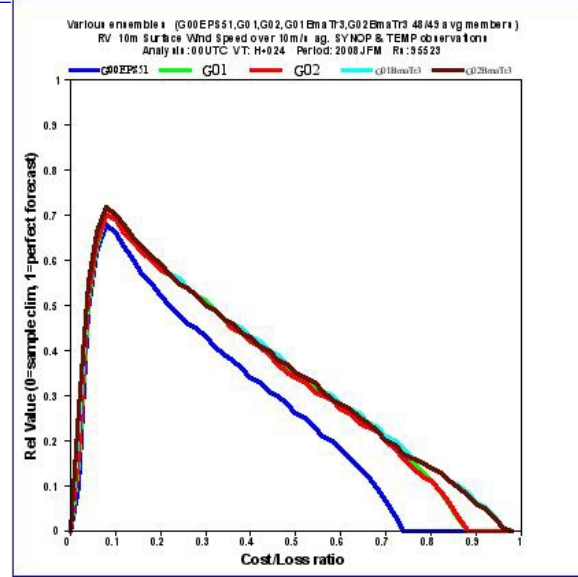
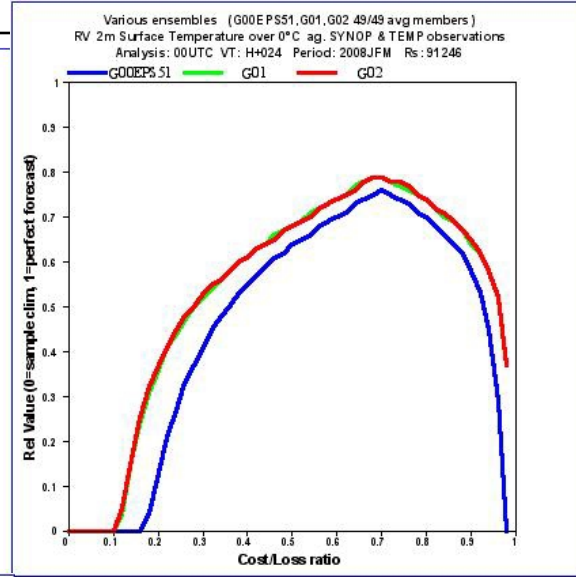
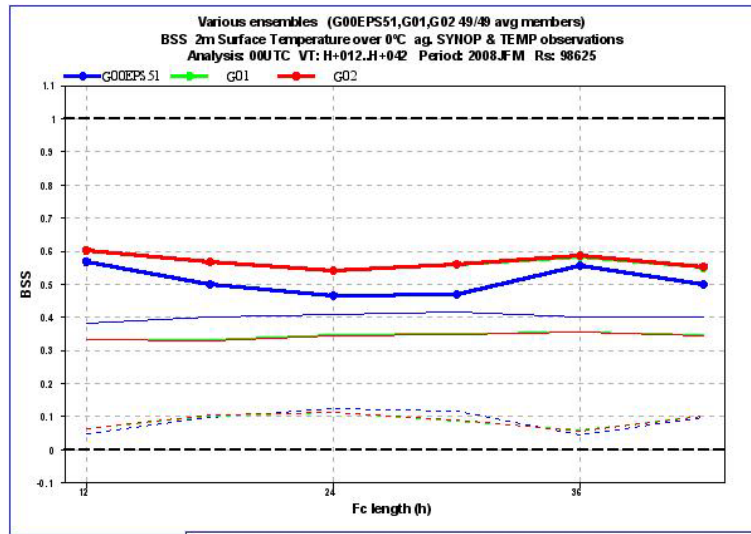


7d LAMEPS

Experiment of GLAMEPS (fyi)

- The experiments covered a two week summer (2007) and a seven week winter (2008) period, containing several large and small scale severe weather events.
- The results of these configuration experiments indicate that, in terms of general performance, ***a 12km resolution version of GLAMEPS (EUROTEPS, HIRLAM EPS, ALADIN EPS) with 44 members provides clear and consistent added value over the ECMWF EPS on the short range (+12 - +48h).***

Results GLAMEPS vs. ECMWF (fyi)



GLAMEPS scores better than ECMWF EPS!

- Examples of added value of GLAMEPS configuration 2 (**red**) over ECMWF EPS (**blue**) according to various quality measures. On the left and right, respectively, are shown the
 - Brier skill score and the
 - cost-loss ratio, for the probabilities of +24h forecasts for
 - T2m > 0 degrees (top panel),
 - 10m wind speed > 10m/s (middle panel) and
 - precipitation >5mm/6h (bottom panel).
- For all of these quality indicators, **the GLAMEPS ensemble scores better than the ECMWF ensemble!**

The ALADIN contribution (fyi)

- The contribution stays **limited to Brussels** (2 local persons + 1 LACE stay of 6 weeks)
- From the tests it has been shown the **ALADIN** contributions **adds to the performance** of the system
- It has been fully incorporated into the GLAMEPS sms system and **will thus become part of the operational system**

ALADIN: plans (fyi)

- **GLAMEPS: primary first aim is capacity building**
- **ALADIN: Surface data assimilation** has been installed for GLAMEPS at ECMWF [work in Brussels, stay by Antonin Bucanek (Cz)], and will be part of the next validations
- **ALADIN** Afterwards: the Brussels part will be configured locally to start making tests of a **distributed system**



GA: take note and provide feedback if you want

- Suggestion on distributed GLAMEPS
- Plans for the incorporation of **LAEF**?