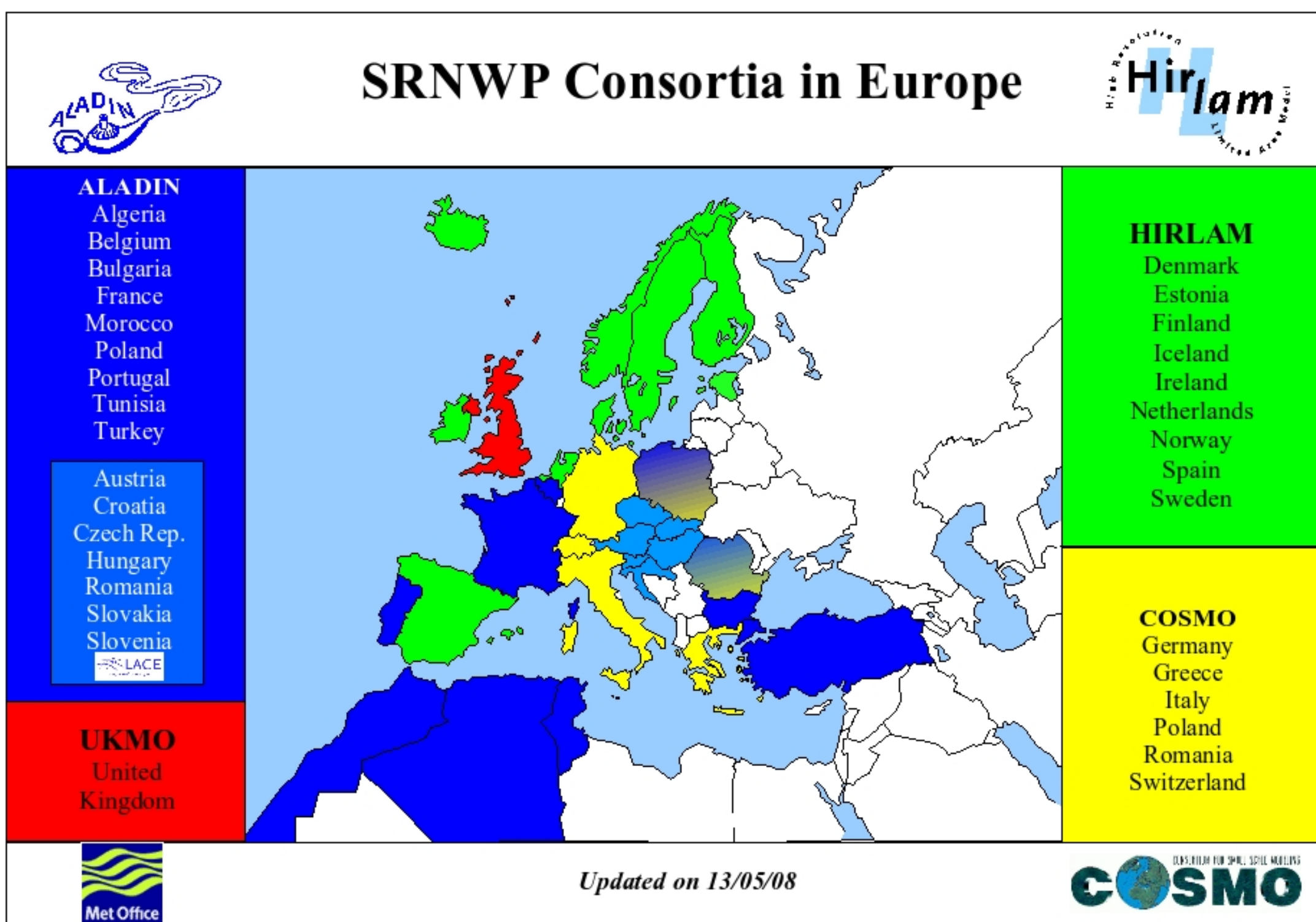
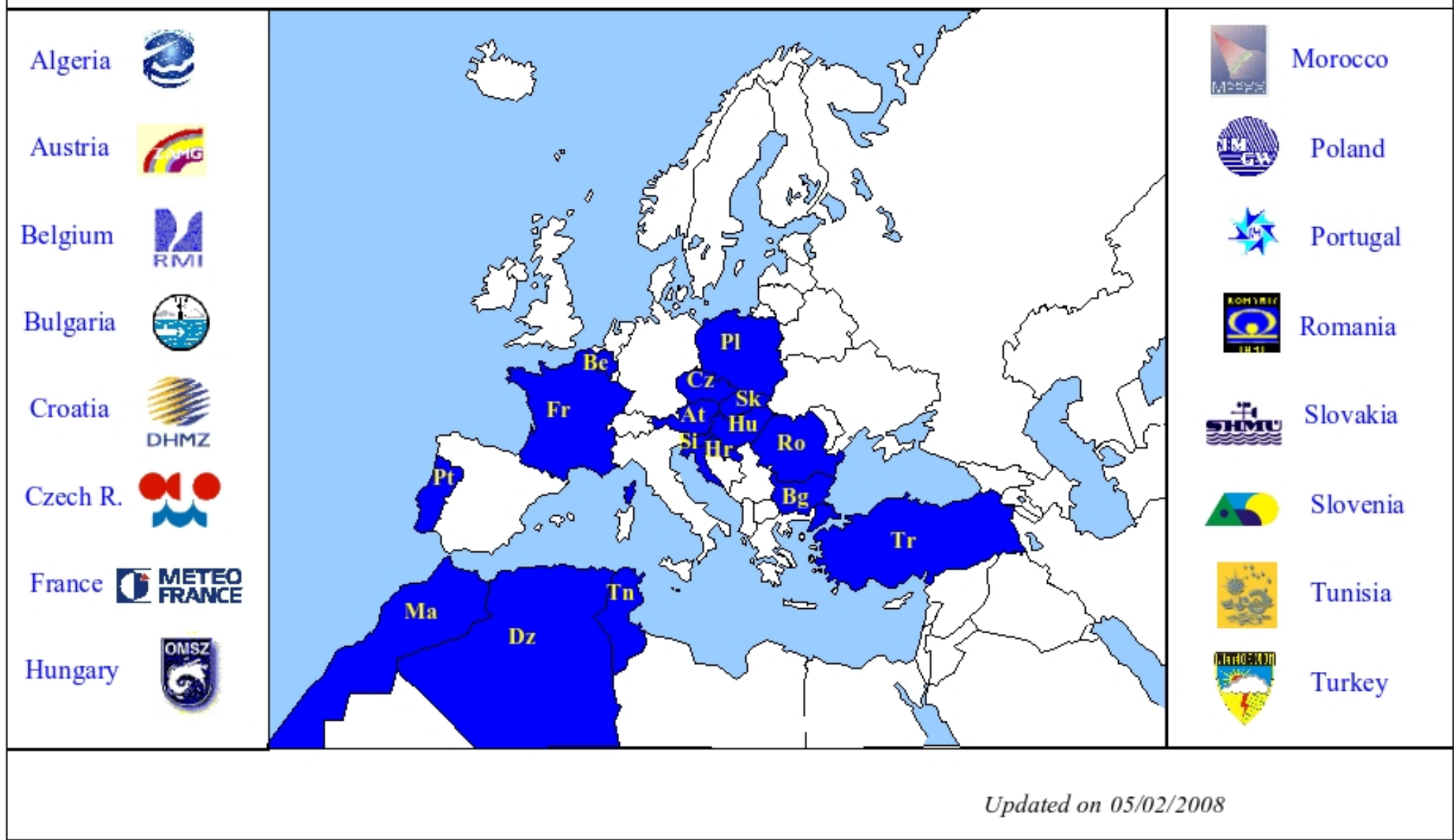


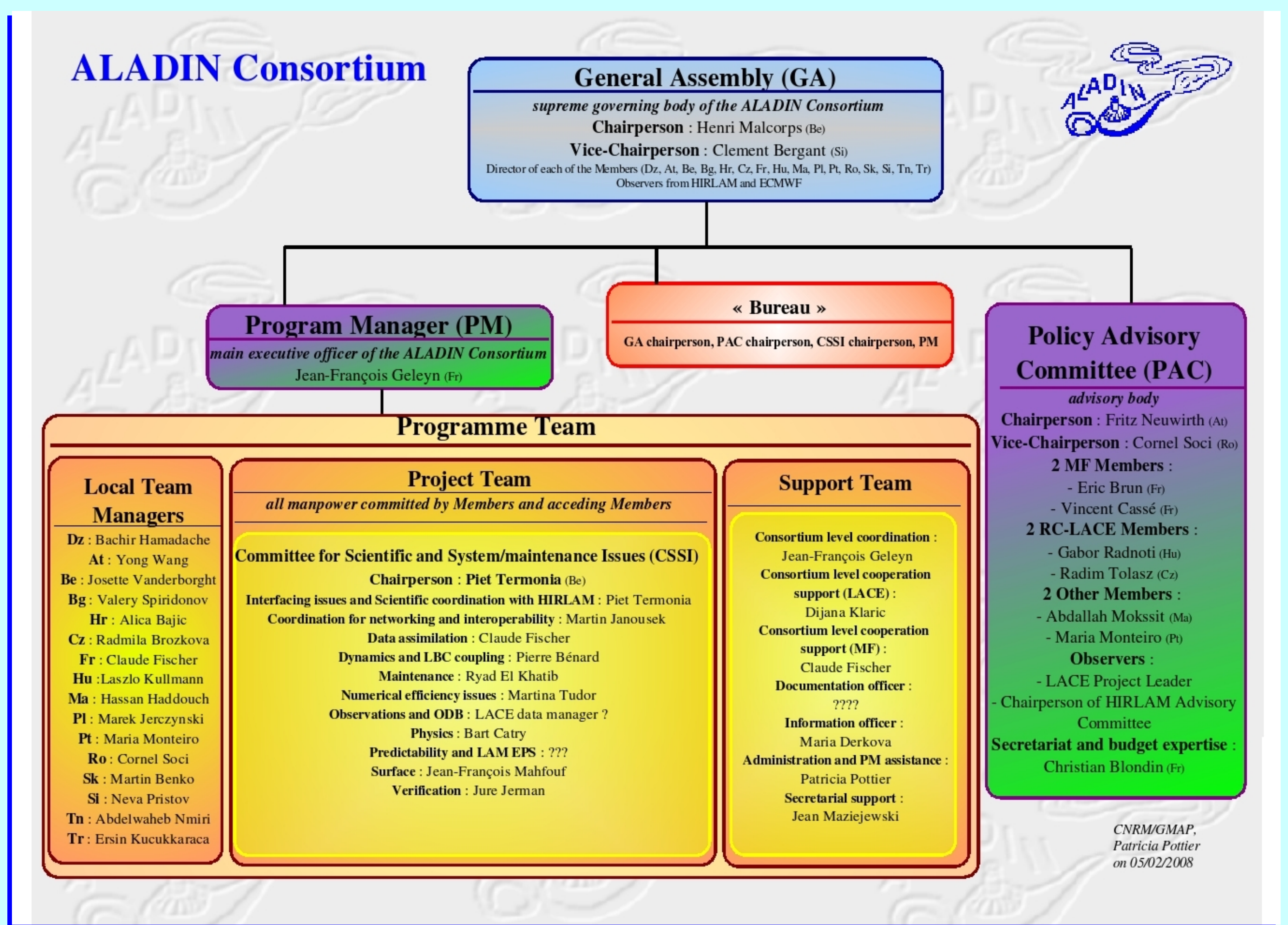
SRNWP Consortia in Europe



Members of the ALADIN Consortium



ALADIN Consortium



Meetings' museum ...

	Main ALADIN Workshops	Other Workshops	EWGLAM/SRNWP	ALATNET-TC	Core T-C	Other ALATNET	SRNWP-SW	Miscellaneous		Assembly	PAC/Bureau	GA-WG	Miscellaneous
91			7-11 Oct At (13)						91				
92			5-9 Oct [Be (14)]						92				
93			4-8 Oct Cz (15)				28-29 Oct Fr SRNWP birth		93				
94								2-3 Jun [Copenhagen (SLAM)]	94				31 May Fr
95			2-6 Oct Ro (Sinaia) (17/2)				18-19 Sep At Stat-dyn adaptation		95				
96	25-26 Jun Sk (Wk1)	16-17 Sep Si (Wk2 workstation)							96	25 Nov Fr (Paris A1)		24 Apr Fr	
97	16-18 Jun Hu (Wk3)		6-10 Oct Hu (19/4)				8-9 Dec Fr Numerical technics	1-26 Sep Fr (Training for LACE)	97	5 Dec Be (A2)			
98	10-12 Jun Cz (Wk5)	18-20 Feb Fr (Wk4 implementation)						20 Feb Fr (AWOC 1) 6 Oct [Copenhagen (AWOC 2)]	98	6 Nov Cz (A3)			
99	15-17 Feb Ro (Wk6)	17-19 Nov Si (Wk7 operational)	11-15 Oct Sk (21/6)				26-27 Apr Cz Numerical technics	17 Feb Ro (AWOC 3)	99	6 Dec Pt (A4)			22-26 Mar Fr
00	19-20 Jun Pl (Wk8)	6-8 Nov Be (Wk9 operational)	9-13 Oct Fr (22/7)	15-26 May Cz (Radostovice) High Resolution			4-6 Dec At Stat-dyn adaptation		00	24 Nov At (A5)		24 Jan Si (MoU prep.)	
01	7-8 Jun Fr (Wk10)	12-13 Nov Pt (Wk11 operational)	8-12 oct Pl (23/8)	11-22 Jun Fr (Gourdon) Data Assimilation			2-3 Jul Sk Numerical technics		01	31 May Fr (Paris MoU and anniversary)		23 Feb Ro (MoU prep.)	10-14 Dec Fr
02	3-6 Jun Hr (Medulin Wk12)			27 May - 1 Jun Si (Kranjska-Gora) Numerical Methods		22-23 Apr Be Mid-term Review	12-13 Dec Fr Numerical technics	11 Mar Hu (Verification) 13-15 May Fr (System Collaboration) 16 Sep - 4 Oct Cz (Physics training for LACE) 25-29 Nov Hu (Maintenance and phasing)	02	14 Jan Mo (A6) 28 Oct Ro (A7)		19 Apr Hr (Dubrovnik Africa)	
03	24-28 Nov Cz (Wk13)		6-9 Oct Pt (25/10)			15-17 Oct Hu (Kiral.) Scientific Results	5-7 May At Stat-dyn adaptation	17-21 Feb Si (Coupling) 11-12 Apr Cz (AA) 14-18 Apr Hu (ODB training) 20-22 Oct Hu (Data assimilation) 30-31 Oct Fr (RAPS)	03	31 Oct Pl (A8)			
04	1-4 Jun At (Innsbruck Wk14)							13 Feb Cz (AAA) 15-19 Mar Fr (NH) 22-26 Nov Cz (TCWGPDI)	04	29-31 Oct Hr (Split A9)			
05	6-10 Jun Sk (Wk15)		3-5 Oct Si (27/12)		21-25 Nov Ro (Brasov) AROME-1		1-2 Jun At Stat-dyn adaptation	24-26 Jan [Tartu (Convection clouds)] 14-18 Nov Hu (Code maintenance & DA) 11-13 Dec [Oslo (Physics and diagnostics)]	05	21 oct Sk (A10)			
06	16-19 May Bg (Wk16 with LTM meeting)						17-18 May Bg Verification 5-6 Dec Hr Numerical technics	6-10 Jun Hu (3DVAR/ODB) 13-14 Nov At (LAMEPS) 11-13 Dec Fr (SURFEX)	06	23-24 Feb Be (extraordinary GA) 9-10 Nov Hu (GA11)	26 Jan At (PAC1) 21-22 Sep Pt (PAC2)		23-24 Oct Sk (LTM)
07	23-26 Apr [Oslo Wk17 with LTM meeting]		9-12 Oct Hr (Dubrovnik) (29/14)		26-30 Mar Cz (Radostovice) ALARO-0			12-14 Mar Fr (Cloudy boundary layer) 12-14 Nov Hu (Surface assimilation)	07	7-8 Nov Si (GA12)	7-8 Jun Cz (PAC3) 24-25 Oct At (Bureau)		
08	7-10 Apr Be (Wk18 with LTM meeting)				4-7 Mar Pt AROME-2			24-26 Jun Fr (Surface canopy)	08	6-7 Nov Pt (GA13)	19-20 May Mo (PAC4)		
09	[De Bilt]								09	Tr GA14			
10									10	Cz GA15			

[...] not in an ALADIN member (at the time of the event)

The events usually took place in the main meteorological centre of the countries (if not the town is indicated)